



available at www.sciencedirect.com



journal homepage: www.elsevier.com/locate/vaccine



A killed *Leishmania* vaccine with sand fly saliva extract and saponin adjuvant displays immunogenicity in dogs

Rodolfo Cordeiro Giunchetti^{a,b,*}, Rodrigo Corrêa-Oliveira^b,
Olindo Assis Martins-Filho^c, Andréa Teixeira-Carvalho^{a,c},
Bruno Mendes Roatt^a, Rodrigo Dian de Oliveira Aguiar-Soares^a,
Wendel Coura-Vital^a, Raquel Tropa de Abreu^a, Luiz Cosme Cotta Malaquias^d,
Nelder Figueiredo Gontijo^e, Cláudia Brodskyn^f, Camila Indiani de Oliveira^f,
Dirceu Joaquim Costa^f, Marta de Lana^{g,h}, Alexandre Barbosa Reis^{a,b,h,*}

^a Laboratório de Imunopatologia, Núcleo de Pesquisas em Ciências Biológicas, Instituto de Ciências Exatas e Biológicas, Universidade Federal de Ouro Preto, Ouro Preto, Minas Gerais, Brazil

^b Laboratório de Imunologia Celular e Molecular, Instituto René Rachou, Fundação Oswaldo Cruz, Belo Horizonte, Minas Gerais, Brazil

^c Laboratório de Biomarcadores de Diagnóstico e Monitoração, Instituto René Rachou, Fundação Oswaldo Cruz, Belo Horizonte, Minas Gerais, Brazil

^d Núcleo de Pesquisa em Imunologia, Universidade Vale do Rio Doce, Governador Valadares, Minas Gerais, Brazil

^e Laboratório de Fisiologia de Insetos Hematófagos, Departamento de Parasitologia, Instituto de Ciências Biológicas, Universidade Federal de Minas Gerais, Belo Horizonte, Brazil

^f Laboratório de Imunoparasitologia, Centro de Pesquisas Gonçalo Moniz Fundação Oswaldo Cruz, Salvador, Bahia, Brazil

^g Laboratório de Doença de Chagas, Núcleo de Pesquisas em Ciências Biológicas, Instituto de Ciências Exatas e Biológicas, Universidade Federal de Ouro Preto, Ouro Preto, Minas Gerais, Brazil

^h Departamento de Análises Clínicas, Escola de Farmácia, Universidade Federal de Ouro Preto, Ouro Preto, Minas Gerais, Brazil

Received 6 October 2007; received in revised form 14 November 2007; accepted 21 November 2007

Available online 17 December 2007

KEYWORDS

Canine visceral leishmaniasis;
Cell and humoral immune response;
Flow cytometry

Summary A vaccine against canine visceral leishmaniasis (CVL), comprising *Leishmania braziliensis* promastigote protein, sand fly gland extract (SGE) and saponin adjuvant, was evaluated in dog model, in order to analyse the immunogenicity of the candidate vaccine. The vaccine candidate elicited strong antigenicity in dogs in respect of specific SGE and *Leishmania* humoral immune response. The major saliva proteins recognized by serum from immunized dogs exhibited molecular weights of 35 and 45 kDa, and were related to the resistance pattern against *Leishmania* infection. Immunophenotypic analysis revealed increased circulating CD21⁺ B-cells

* Corresponding authors at: Laboratório de Imunopatologia, Núcleo de Pesquisas em Ciências Biológicas, Instituto de Ciências Exatas e Biológicas, Universidade Federal de Ouro Preto, Campus Universitário, Morro do Cruzeiro, 35.400-000, Ouro Preto, Minas Gerais, Brazil. Tel.: +55 31 3559 1694; fax: +55 31 3559 1680.

E-mail addresses: giunchetti@nupeb.ufop.br (R.C. Giunchetti), alexreis@nupeb.ufop.br (A.B. Reis).

0264-410X/\$ – see front matter © 2007 Elsevier Ltd. All rights reserved.

doi:10.1016/j.vaccine.2007.11.057

and CD5⁺ T-cells, reflected by higher counts of CD4⁺ and CD8⁺ T-cells. The observed interaction between potential antigen-presenting cells (evaluated as CD14⁺ monocytes) and lymphocyte activation status indicated a relationship between innate and adaptive immune responses. The higher frequency in *L. chagasi* antigen-specific CD8⁺ T-lymphocytes, and their positive association with intense cell proliferation, in addition to the progressively higher production of serum nitric oxide levels, showed a profile compatible with anti-CVL vaccine potential. Further studies on immunological response after challenge with *L. chagasi* may provide important information that will lead to a better understanding on vaccine trial and efficacy.

© 2007 Elsevier Ltd. All rights reserved.

Introduction

The New World sand fly, *Lutzomyia longipalpis*, is an important vector of *Leishmania chagasi*, the etiological agent of visceral leishmaniasis (VL) [1]. The act of probing and feeding by an infected female sand fly introduces into the host both secretions from the salivary gland of the fly and promastigotes of *L. chagasi* [2]. It is known that the saliva of *L. longipalpis* possesses apyrase, anticoagulant, vasodilatory and immunomodulatory activities that could facilitate evasion of the inflammatory and immune responses of the host [3–7]. Furthermore, initial studies with *Leishmania major* [8] demonstrated that sand fly saliva exacerbates host infection, and similar findings have been reported for a number of different species of *Leishmania* [2,9–11].

Mice that had been exposed to homogenates of the salivary glands of *L. longipalpis* or to bites from uninfected sand flies were protected from infection when challenged with either needle-inoculated *L. major* plus sand fly saliva [12] or with bites from sand flies infected with *L. major* [13]. Morris et al. [14] reported that animals vaccinated with maxadilan, a potent vasodilator and immunomodulator from *L. longipalpis*, were protected against *L. major* infection. Additionally, mice that had been vaccinated with a 15 kDa salivary protein (PpSP15) from sand flies were immune to infection by *L. major* when challenged with promastigotes and saliva [15]. These data support the hypothesis that induction of an immune response to salivary proteins of the sand fly may facilitate a protective immune response against *Leishmania* infection.

Although an effective vaccine against human and canine visceral leishmaniasis (CVL) is not yet available, much effort has been expended in this area in recent years and several candidate vaccine antigens have been studied extensively in dogs. A recent strategy for the development of a vaccine against leishmaniasis has been based on the use of purified fractions from parasite extracts (FLM antigen) or from parasite cultures (excreted/secreted antigens), frequently using saponin as adjuvant, and some encouraging results have been reported [16–25].

However, in the search for a potential vaccine, targeting a single protein might not be an adequate approach, and the selection of multiple proteins as candidates may be required [7,26]. In the development of a vaccine against leishmaniasis, a strategy based on a combination of sand fly salivary gland extract (SGE) and *Leishmania* antigens might be appropriate. Moreover, although the current strategy for vaccination against leishmaniasis is based on the use of recombinant antigens, whole parasite vaccines are still attractive in terms of cost, safety, and stability of

their biochemical composition and antigenicity. Trials utilizing such vaccines have already been undertaken [27], and several studies involving the dog model have revealed that crude antigen vaccines elicit strong cell reactivity against *Leishmania* antigens [28–31]. Unfortunately, the detailed immune status of the experimental animals following SGE vaccination was not evaluated within the framework of these studies.

Dogs represent the most important domestic reservoirs of *L. chagasi* [32], and a vaccine against CVL would be an important tool in the control of human VL by decreasing dramatically the infection pressure of *L. chagasi*/*L. infantum* [33–37]. A better understanding of the canine immune response to sand fly salivary proteins could be of significant assistance in defining alternative vaccination strategies by which to control CVL as well as human VL. The present study constitutes the first detailed analysis of immunogenicity in experimental dogs that had received a promising CVL vaccine composed of killed *L. braziliensis* together with saponin adjuvant and SGE.

Material and methods

Details of the study were presented to and approved by the Ethical Committee for the Use of Experimental Animals of the Universidade Federal de Minas Gerais, Belo Horizonte-MG, Brazil.

Sand flies and salivary gland extracts

Closed colonies of *L. longipalpis* were maintained at 25 °C and 60–80% relative humidity according to a published protocol [38]. SGE was prepared using the method of Cavalcante et al. [6] in which the acini of salivary glands of 4-day-old, mated, but non-blood fed, female sand flies were dissected in 0.8% unbuffered saline, broken by sonication for 10 s and centrifuged at 10,000 × g for 2 min. The supernatant was collected and stored –70 °C until required for use.

Study animals and vaccination

Twenty-five mongrel male and female dogs that had been born and reared in the kennels of the Instituto de Ciências Exatas e Biológicas, Universidade Federal de Ouro Preto, Ouro Preto, Minas Gerais, Brazil, were vaccinated at the age of 7 months against rabies (Tecpar, Curitiba-PR, Brazil), canine distemper, type 2 adenovirus, coronavirus, parainfluenza, parvovirus and leptospira (Vanguard® HTLP 5/CV-L; Pfizer Animal Health, New York, NY, USA), and

treated with an anthelmintic. The absence of specific anti-*Leishmania* antibodies was confirmed by indirect fluorescence immunoassay. Ouro Preto city is considered a non-endemic area for visceral leishmaniasis in Brazil. Besides negative serology by IFAT, others additional effective approaches were performed aim to rule out *Leishmania* infection such as sprayed the kennels of the UFOP with pyrethroid insecticide and protected all their extension throughout an appropriated and security stainless steel gauze as recommended by Brazilian Ministry of Healthy.

Animals were treated within four experimental groups: (i) the control group C ($n=10$) received 1 mL of sterile 0.9% saline; (ii) Sap group ($n=5$) received 1 mg of saponin as proposed by Borja-Cabrera et al. [39] and Santos et al. [25] in 1 mL sterile 0.9% saline; (iii) the Sal group ($n=5$) received SGE prepared from five acini of salivary glands of *L. longipalpis* in 1 mL sterile 0.9% saline; (iv) the LBSal group ($n=5$) received 600 μg of *Leishmania braziliensis* promastigote protein (Lb; prepared as described previously [30]) plus SGE (as above) in 1 mL sterile 0.9% saline; and (v) the LBSap-Sal group ($n=5$) received 600 μg of Lb plus 1 mg of saponin together with SGE in 1 mL sterile 0.9% saline. The type of saponin used is a *Quilaja saponaria* Molina extract [40,41] now commercialized by Sigma Chemical Co., St. Louis, MO, USA. In all cases, animals received three subcutaneous injections in the right flank at intervals of 4 weeks.

Local and/or general reactions to immunization

A veterinarian checked all animals throughout the course of the study and also provided full medical support as required. Dogs were monitored particularly closely for 2 weeks following each injection. A general tolerance to vaccination was established from an overall evaluation (including rectal temperature measurements) of the health of the animal. Local tolerance was determined by direct visual examination, and when lesions were observed they were measured at 24 h intervals over a period of 72 h after each injection.

Collection of blood samples

Samples (5 mL) of peripheral blood were collected from the jugular vein of each dog and transferred to tubes containing an amount of EDTA sufficient to produce a final concentration of 1 mg/mL. Blood samples were stored at room temperature for up to 12 h prior to processing. A Coulter counter (Miami, FL, USA) model MD18 was employed in order to determine the absolute count of lymphocytes in each sample.

Humoral immune response

Immunogenicity was evaluated by the determination of antibodies raised against SGE and a soluble lysate of *L. chagasi* antigen (MHOM/BR/1972/BH46) (SLCA) according to conventional enzyme-linked immunosorbent assays (ELISA) [42,43]. The wells of MaxiSorp™ (Nalge Nunc Intl., Rochester, NY, USA) 96-well microplates were coated with SGE (at a concentration of one pair of salivary glands/well) or SLCA

(2 μg /well), serum samples were added at dilutions of 1:100 (SGE-ELISA) or 1:80 (SLCA-ELISA), the wells were washed and peroxidase-conjugated goat anti-dog IgG1 or sheep anti-dog IgG and IgG2 (Bethyl Laboratories Inc., Montgomery, TX, USA) added at dilutions of 1:1000 (IgG1), and 1:16000 (IgG and IgG2). The wells were then re-washed, substrate and chromogen (*o*-phenylenediamine; Sigma–Aldrich Co., St Louis, MO, USA) added, and absorbance recorded at 405 nm (SGE-ELISA) or 492 nm (SLCA-ELISA) on a Multiskan® MCC 340 (Labsystems, Helsinki, Finland) automatic microplate reader.

Western blot of SGE

Western blot analysis of *L. longipalpis* SGE was performed according to a published method [12]. Briefly, a sample of SGE containing ca. 40 μg of protein (equivalent to 40 pairs of salivary glands from *L. longipalpis*) was submitted to SDS-PAGE on NuPAGE™ Novex bis–Tris gels (4–12%, 1.0 mm, 2D; Invitrogen, Carlsbad, CA, USA) and transferred to nitrocellulose. The membrane was cut into strips, blocked overnight with Tris HCl buffer (pH 8.0) containing 150 mM NaCl plus 5% non-fat milk, and incubated with dog serum (1:50 dilution) in blocking buffer. Following incubation in anti-dog IgG alkaline phosphatase conjugate (1:4000 dilution; Promega, Madison, WI, USA), bands were visualized by the addition of alkaline phosphatase substrate (Promega, Madison, WI, USA).

Immunophenotyping

Unlabelled canine monoclonal antibodies (mAbs) anti-CD5 (rat-IgG2a: clone YKIX322.3), anti-CD4 (rat-IgG2a: clone YKIX302.9), anti-CD8 (rat-IgG1: clone YCATE55.9) were used in an indirect immunofluorescence procedure in which pooled normal rat serum (diluted 1:6000) was employed as isotypic control, and fluorescein isothiocyanate (FITC)-labelled IgG sheep anti-rat polyclonal antibody was used as the secondary antibody. Non-specific binding of the second-step reagent was blocked with pooled normal sheep serum in phosphate buffered saline (PBS) containing 10% foetal bovine serum (Gibco, Grand Island, NY, USA).

FITC-labelled mouse anti-human-CD21 (mouse-IgG1: clone IOBla), phycoerythrin (PE)-Cy5-conjugated mouse anti-human-CD14 (mouse-IgG2a: clone TÜK4), RPE-conjugated mouse anti-mouse MHC-I (mouse-IgG2b: clone 2G5) and RPE-conjugated hamster anti-mouse CD80 (Armenian hamster-IgG2, clone 16-10A1) mAbs were used in a direct immunofluorescence procedure. In order to determine the optimal dilutions for each assay, mAbs were titred in PBS containing 1% bovine serum albumin and 0.1% sodium azide. Unlabelled mAbs, anti-CD14 and anti-MHC-I mAbs were purchased from Serotec (Oxford, UK), anti-CD21 was from Immunotech Co. (Marseille, France) and anti-CD80 was from BD Bioscience Pharmingen (Franklin Lakes, NJ, USA).

Microplate assays for immunophenotyping canine whole blood leukocytes (WBL) in fresh blood samples and in peripheral blood mononuclear cells (PBMC) obtained after *in vitro* stimulation, were carried out as described by Giunchetti et al. [30] and Reis et al. [44].

Flow cytometry

Flow cytometric measurements were performed on a FAC-Scan instrument (Becton Dickinson, Mountain View, CA, USA) interfaced to an Apple G3 workstation running Cell-Quest software (Becton Dickinson) for both data acquisition and analysis. A total of 15,000 events were acquired for each preparation. Canine WBL were selected on the basis of their characteristic forward (FSC) and side (SSC) light-scatter distributions. Following FSC and SSC gain adjustments, the lymphocytes were selected by gating on the FSC versus SSC graph. Fluorescence was evaluated from FITC, PE and PE-Cy5 spectra, respectively, on FL1, FL2 and FL3 in single-histogram representations. Monocytes were analysed by fluorescence intensity detection on single histograms obtained directly from un-gated leukocytes. A marker was set as an internal control for non-specific binding in order to encompass >98% of unlabelled cells, and this marker was then used in the analysis of data for a given animal. The results were expressed as the percentage of positive cells within the selected gate for cell surface markers presenting bimodal distributions (CD5, CD4, CD8 and CD21). Semi-quantitative analyses were carried out for the cell surface markers MHC-I and CD80, which exhibited unimodal distributions, in order to evaluate differential expression, and the results were expressed as mean fluorescence channel (MFC) on a log scale. Data were also expressed as absolute counts in order to allow the normalization of values obtained from groups presenting different overall leukocyte counts. The absolute counts for lymphocytes and monocytes were calculated as (global leukocyte counts \times percentage of lymphocytes or monocytes in hematology)/100. The absolute counts for lymphocyte subsets and monocytes were determined, respectively, from (absolute lymphocyte counts \times percentage of fluorescent positive cells within lymphogate)/100 and (global leukocyte counts \times percentage of fluorescent positive cells within un-gated monocytes)/100.

In vitro assays

PBMC were isolated from 20 mL samples of heparinized blood that had been layered onto 10 mL of Ficoll-Hypaque density gradient (Histopaque[®] 1.077; Sigma Chemical Co.) and centrifuged at $450 \times g$ for 40 min at room temperature. The separated PBMC were resuspended in Gibco RPMI 1640 medium, homogenized, washed twice with RPMI 1640, centrifuged at $450 \times g$ for 10 min at room temperature, homogenized and finally resuspended in RPMI 1640 at 10^7 cells/mL.

In vitro assays were carried out in cell culture medium comprising RPMI 1640 supplemented with streptomycin (100 mg/mL), penicillin (100 U/mL), L-glutamine (2 mM), β -mercaptoethanol (5×10^{-5} M) and 10% heat-inactivated foetal calf serum. Lymphoproliferation assays were performed in 96-well flat-bottomed tissue culture plates (Corning, New York, NY, USA), each well containing 150 μ L of supplemented RPMI medium. Aliquots (25 μ L) of PBMC (2.5×10^5 cells/well) were added to triplicate wells together with 25 μ L of *L. braziliensis* soluble antigen (SLbA; 25 μ g/mL) or 25 μ L of SLcA (25 μ g/mL), obtained

according to Reis et al. [42,43], for the antigenic stimulus assays. In the mitogenic stimulus assays, 25 μ L aliquots of PBMC (2.5×10^5 cells/well) were added to triplicate wells together with 25 μ L of phytohaemagglutinin (PHA; 2.5 μ g/mL; Sigma-Aldrich Chemie GmbH, Taufkirchen, Germany). Assay mixtures were incubated under a humidified 5% CO₂ atmosphere at 37 °C for 3 (mitogenic-stimulated cultures) or 5 days (antigenic-stimulated cultures). ³H-thymidine (1 μ Ci; Sigma Chemical Co.) was added to each well 6 h before the end of the incubation period. The cells were subsequently harvested onto glass fibre filters and the incorporation of radioactivity determined by liquid scintillation counting. Control assays were prepared exactly as above, employing 25 μ L aliquots of PBMC (2.5×10^5 cells/well) but with 25 μ L of RPMI 1640 medium replacing the stimulant, and were incubated for an appropriate time. Proliferation responses were expressed in terms of mean counts/min in triplicate wells, whilst the stimulation index was calculated as (mean proliferation response of cultures stimulated by SLbA or SLcA/mean proliferation response of unstimulated cultures).

In order to investigate the immunophenotypic features, PBMC were cultured in 48-well flat-bottomed tissue culture plates (Costar, Cambridge, MA, USA), each well containing 650 μ L of supplemented RPMI medium. Aliquots (50 μ L) of PBMC (5.0×10^5 cells/well) were added to triplicate wells together with 100 μ L of SLbA (25 μ g/mL) or 100 μ L of SLcA (25 μ g/mL). Control assays were prepared as above but employing 50 μ L aliquots of PBMC (5.0×10^5 cells/well) and 100 μ L of RPMI 1640 medium replacing the stimulant. Incubations were carried out under a humidified 5% CO₂ atmosphere at 37 °C for 5 days, after which the PBMC were removed for immunophenotyping and the supernatants were collected for further assay as described below.

Nitric oxide (NO) levels in serum

As an indirect measurement of NO production, nitrite levels were determined in serum samples using the Griess reaction [45,46]. All reagents employed in the assay were purchased from Sigma-Aldrich Co. Nitrate reductase (1 U/mL; 10 μ L), 6 mM NADPH (10 μ L) and 200 mM FAD (10 μ L) were added to 100 μ L of serum diluted 1:2 in distilled water. After an overnight incubation at 37 °C, the sample was deproteinized by the addition of 1/20 volume of zinc sulphate (300 g/L), and the mixture centrifuged at $10,000 \times g$ for 15 min. An aliquot (100 μ L) of Griess reagent (0.1% naphthylethylenediamine dihydrochloride, 1% sulphonylamide and 5% phosphoric acid) was added to the supernatant and, following 10 min incubation in the dark at room temperature, the absorbance was measured at 540 nm in an automatic microplate reader. Each sample was assayed in duplicate. The concentration of nitrite (NO₂⁻) was determined by interpolation from a standard curve constructed by plotting the absorbance values of standard sodium nitrate solutions against their corresponding concentrations. The correlation plot was linear in the range 0–100 μ mol/L. Data were expressed as means of NO production at T0 (immediately prior to the application of the first dose of vaccine), T1 (15 days after the application of the first dose of vaccine), T2

(15 days after the application of the second dose of vaccine) and T3 (15 days after the application of the third dose of vaccine).

Statistical analysis

Statistical analyses were performed with the aid of Prism 4.0 software package (Prism Software, Irvine, CA, USA). Normality of the data was established using the Kolmogorov–Smirnov test. One-way analysis of variance (ANOVA) and Tukey post tests were used to investigate differences between groups with respect to humoral immune responses and immunophenotypic profiles. Student's *t*-tests were employed to evaluate differences in mean values determined in *in vitro* assays of humoral immune response anti-SGE or stimulated cultures and control cultures prepared at T0 and T3. Associations between phenotypic features in circulating leukocytes or between phenotypic features and cell proliferation were investigated using Pearson's rank correlation. In all cases, differences were considered significant when *P* values were <0.05.

Results

Local induration was the major characteristic of adverse reaction during immunization with LBSapSal

Vaccination was not associated with pain, fever, hyperthermia, lymphadenopathy or any other general adverse reactions. Furthermore, no local adverse reactions were observed in vaccinated animals, with the exception of mild induration reactions in some dogs vaccinated with Sap and LBSapSal (Table 1). In spite of the presence of nodules in some dogs that received saponin as adjuvant (Sap and LBSapSal) these did not result in the formation of ulcerated lesions.

Serum from dogs vaccinated with LBSapSal exhibited elevated anti-SGE immunoglobulin isotype levels, reflecting an intense immunogenic reaction, and showed reactivity against three different SGE proteins in Western blot analysis

The specific anti-SGE humoral responses of the four groups of experimental animals were determined at T0 (immediately prior to the application of the first dose of vaccine) and at T3 (15 days after the application of the third dose of vaccine). Significant (*P*<0.05) increases in the serum levels of anti-SGE total IgG, IgG1 and IgG2 were observed at T3 in dogs of the LBSapSal group compared with those of the C, Sal and LBSal groups (Fig. 1, left panels). Additional analyses revealed positive associations between total IgG and IgG1 (*P*=0.0244; *r*=0.6994), between IgG and IgG2 (*P*<0.0001; *r*=0.9418) and between IgG1 and IgG2 (*P*=0.0174; *r*=0.7260) in the LBSapSal group at T0 and T3 (Fig. 1, middle panels). Western blot analysis (Fig. 1, right panel) indicated that antibodies produced in dogs that had been vaccinated with preparations containing SGE reacted with three different proteins present in sand fly saliva. Thus, serum samples derived from animals of the LBSapSal group showed significant reactivities against an SGE protein of molecular weight 35kDa, serum samples from the Sal, LBSal and LBSapSal groups were active against a 45kDa SGE protein, whilst serum samples from the Sal and LBSapSal groups were active against a 71kDa SGE protein (Fig. 1, right panel).

LBSapSal elicited an intense production of anti-*L. chagasi* immunoglobulin isotypes

The serum levels of anti-*L. chagasi* immunoglobulins at T0, T1 (15 days after the application of the first dose of vaccine), T2 (15 days after the application of the second dose of vaccine) and T3 (15 days after the application of the third

Table 1 Local alterations in the inoculum region measured 72 h after inoculation with saponin (Sap) and a candidate vaccine composed of *Leishmania braziliensis* promastigote protein plus saponin plus sand fly salivary gland extract (LBSapSal)

Group	Animal code	Nodule size (cm)		
		T1 ^a	T2 ^b	T3 ^c
Sap <i>n</i> = 5	#03	—	—	—
	#05	2.5 × 1.5	4.0 × 4.5	—
	#14	—	—	—
	#20	—	2.0 × 3.0	2.0 × 2.0
	#27	—	—	—
LBSapSal <i>n</i> = 5	#18	—	—	—
	#23	—	—	1.0 × 1.0 cm
	#28	—	—	—
	#31	2.3 × 1.8 cm	—	—
	#38	—	—	—

^a T1, 72 h after the first dose.

^b T2, 72 h after the second dose.

^c T3, 72 h after the third dose.

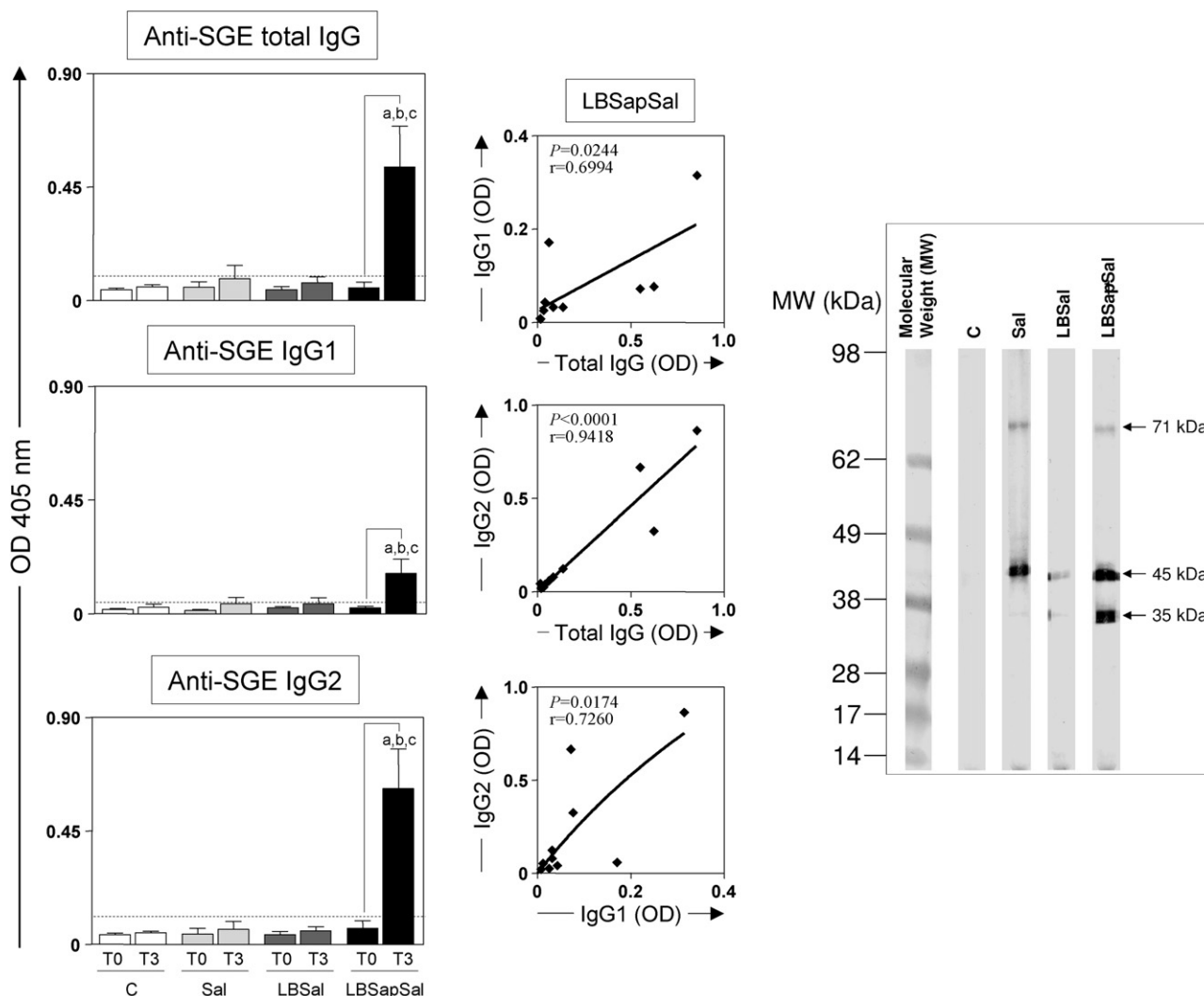


Figure 1 Comparative immunogenicity against sand fly salivary gland extract (SGE) in the different treatment groups: C (control; □), Sal (SGE; ▨), LBSal (killed *Leishmania braziliensis* vaccine plus SGE; ▩), and LBSapSal (killed *L. braziliensis* vaccine plus saponin plus SGE; ■). The left panel depicts the reactivities of anti-SGE total IgG, anti-SGE IgG1, and anti-SGE IgG2 (expressed as mean ELISA absorbance values determined at 405 nm in serum samples diluted 1:100) assayed at T0 (prior to the first dose) and at T3 (15 days after the third dose). Significant differences ($P < 0.05$) between values measured at T0 and T3 are indicated by connecting lines. Significant differences ($P < 0.05$) between the LBSapSal group and the control C, Sal, and LBSal groups at T3 are indicated, respectively, by the letters a, b and c. The middle panel shows the correlations between the reactivities (expressed in OD units) of anti-SGE total IgG and anti-SGE IgG1, anti-SGE total IgG and anti-SGE IgG2, and anti-SGE IgG1 and anti-SGE IgG2 in the LBSapSal group (r is the correlation index). The right panel displays the saliva proteins identified by Western blot for different treatment groups. Three protein bands (arrowed) were recognized with molecular weights of 71, 45 and 35 kDa.

dose of vaccine) in the five groups of dogs are shown in Fig. 2. Significant increases in anti-*L. chagasi* total IgG and IgG2 were observed at T1 in animals of the LBSapSal group compared with those of the C and Sap group. Furthermore, vaccination with LBSapSal elicited higher levels ($P < 0.05$) of anti-*L. chagasi* total IgG, IgG1 and IgG2 compared with the C, Sap, Sal and LBSal treatment groups at T2 and T3. Interestingly, in comparison with the C, Sap and Sal groups, the IgG1/IgG2 ratio was significantly higher in the LBSal group at T1 and T2, and in both the LBSal and LBSapSal groups at T3.

Enhanced numbers of circulating CD5⁺ T-lymphocytes and T-subsets (CD4⁺ and CD8⁺) as well as increased levels of CD21⁺ B-cells characterized the major immunophenotypic features of the LBSapSal group

The immunophenotypic profiles of the peripheral blood of dogs treated with different vaccines (Fig. 3) revealed that at T1 there was a significant increase in the number of circulating CD5⁺ T-lymphocytes in animals vaccinated with LBSal and LBSapSal compared with the C, Sap and Sal groups. Addi-

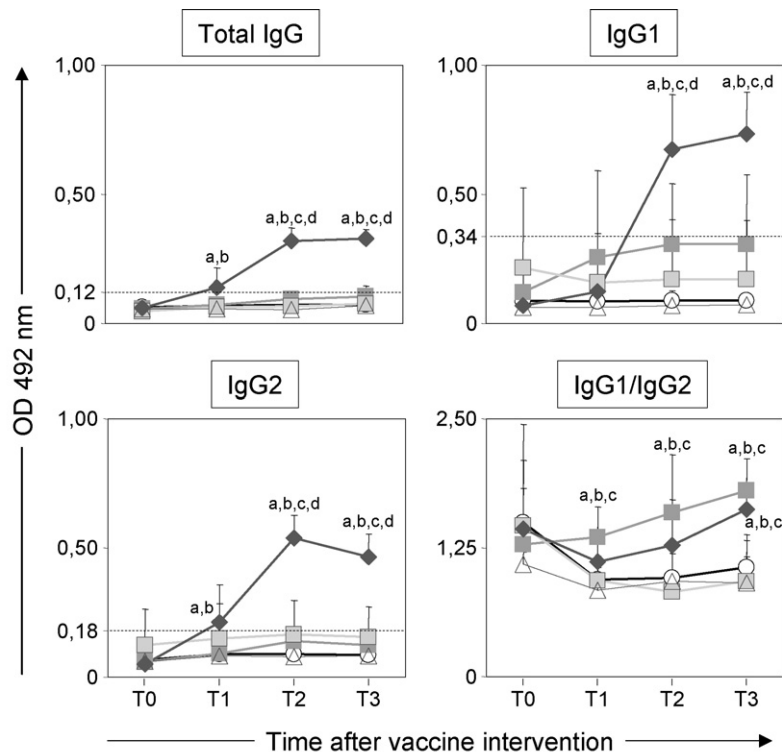


Figure 2 Comparative immunogenicity against soluble lysate of *Leishmania chagasi* antigen in the different treatment groups: C (control; \circ), Sap (saponin; \triangle), Sal (SGE; \square), LBSal (killed *L. braziliensis* vaccine plus SGE; \blacksquare), and LBSapSal (killed *L. braziliensis* vaccine plus saponin plus SGE; \blacklozenge). The upper panels and the lower left panel show the reactivities of anti-*L. chagasi* total IgG, anti-*L. chagasi* IgG1 and anti-*L. chagasi* IgG2 (expressed as mean ELISA absorbance values determined at 492 nm in serum samples diluted 1:80) assayed at T0 (prior to the first dose), T1 (15 days after the first dose), T2 (15 days after the second dose), and T3 (15 days after the third dose). Significant differences ($P < 0.05$) in comparison with the control C, Sap, Sal, and LBSal groups are indicated, respectively, by the letters a, b, c and d. The lower right panel shows the IgG1/IgG2 ratio for the different treatment groups.

tionally, the LBSal group presented higher ($P < 0.05$) CD5⁺ T-cell counts at T2 compared with the Sap and Sal group. Circulating CD4⁺ and CD8⁺ T-lymphocytes were the major T-cell subsets contributing to the enhanced CD5⁺ T-lymphocyte counts in the LBSapSal profile. In this context, increased ($P < 0.05$) CD4⁺ and CD8⁺ T-cell counts were observed at T1 in the LBSapSal group compared with, respectively, the C, Sap, Sal and LBSal groups, and the C, Sap and Sal groups. Similarly, the CD21⁺ B-lymphocyte count exhibited a significant increase in the LBSapSal group compared with the C, Sap, Sal and LBSal groups at T1, although there was a significant decrease in the number of CD21⁺ B-cells in the LBSal group compared with the C group at T2 and T3. When the values at all time periods were considered (Fig. 3, right panel), a positive correlation ($P = 0.0440$; $r = 0.4667$) between CD4⁺ T-cells and CD21⁺ B-cells was apparent in the LBSapSal group.

A marked increase in *in vitro* cell reactivity in the presence of antigenic stimuli was the major characteristic following vaccination with LBSapSal

In order to investigate the reactivities of PBMC against antigens of the vaccine component (*L. braziliensis*; SLbA) and of the etiological agent of VL (*L. chagasi*; SLcA), mem-

ory lymphoproliferative immune responses were evaluated by *in vitro* stimulation assays. Whilst significant increases ($P < 0.05$) in stimulation indices at T3 compared with T0 were observed in the presence of both stimuli in the LBSapSal group, the Sal group displayed significant decreases ($P < 0.05$) (Fig. 4, upper panels). Furthermore, comparative analyses of the different treatment groups showed a significant reduction in cell reactivities to SLcA at T3 in the Sal group compared with the C group. In contrast, the LBSapSal group exhibited a higher ($P < 0.05$) lymphoproliferative reaction at T3 to SLbA compared with the Sap, Sal and LBSal groups, and to SLcA compared with the C, Sap, Sal and LBSal groups.

The frequencies of CD8⁺ T-cells in antigen-stimulated *in vitro* cell proliferation cultures were increased by vaccination with LBSapSal and represented the major T-cell subset presenting a positive association with lymphoproliferation reaction

A comparative analysis of the immunophenotypic profiles of control and stimulated cultures at T3 was conducted in order to identify the major cell population induced *in*

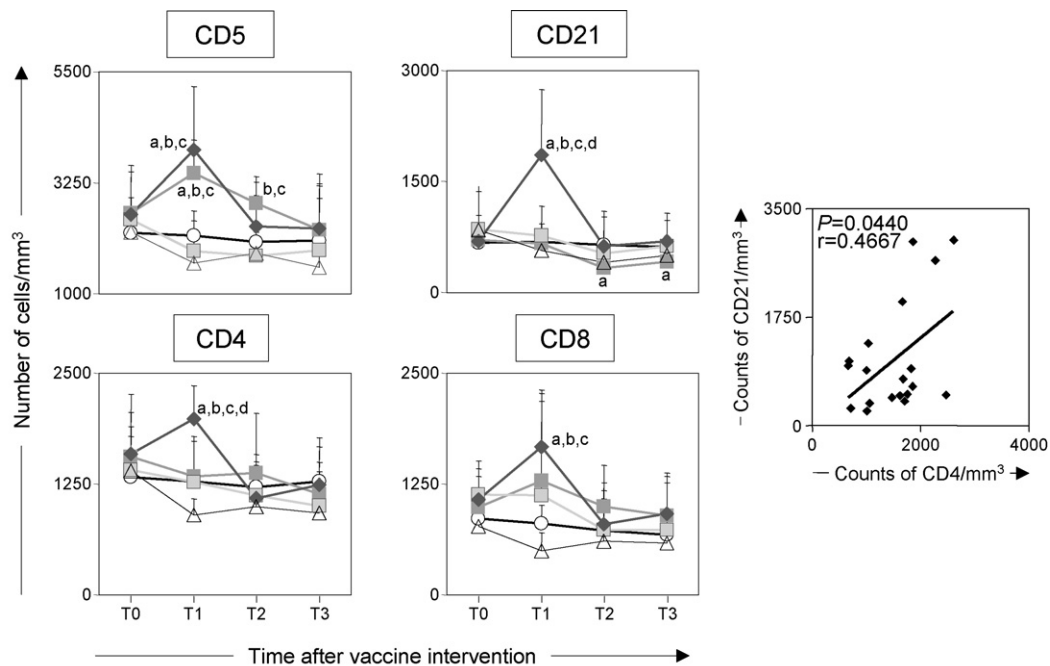


Figure 3 The cell profiles of peripheral blood leukocytes in different treatment groups: C (control; \circ), Sap (saponin; \triangle), Sal (SGE; \square), LBSal (killed *Leishmania braziliensis* vaccine plus SGE; \blacksquare), and LBSapSal (killed *L. braziliensis* vaccine plus saponin plus SGE; \blacklozenge). The left and middle panels depict the immunophenotypic profiles of peripheral blood leukocytes and show the absolute counts of CD5⁺, CD21⁺, CD4⁺ and CD8⁺ cells determined at T0 (prior to the first dose), T1 (15 days after the first dose), T2 (15 days after the second dose), and T3 (15 days after the third dose). Significant differences ($P < 0.05$) in comparison with the control C, Sap, Sal, and LBSal groups are indicated, respectively, by the letters a, b, c and d. The right panel displays the correlation between circulating lymphocytes CD4 and CD21 in the LBSapSal group (r is the correlation index).

vitro by SLbA or SLcA. The data revealed higher ($P < 0.05$) frequencies of CD8⁺ T-cells in the LBSapSal group in contrast to Sap group that presented decreased frequencies of CD21⁺ B-cells in the presence of both SLbA and SLcA compared with non-stimulated control cultures (Fig. 4, middle panel). Furthermore, in an attempt to determine whether the immunophenotypic features of PBMC cultures subjected to antigen-stimulation *in vitro* were associated with a specific cell profile, the levels of association between cell type and proliferation within all five groups were analysed (Fig. 4, lower panel). With respect to the Sal group, negative correlations between CD4⁺ T-cells and proliferation were observed in cultures stimulated by SLbA ($P = 0.0117$; $r = -0.7878$) or SLcA ($P = 0.0301$; $r = -0.7157$). In contrast, the LBSapSal group exhibited positive correlations between CD8⁺ T-cells and proliferation in cultures stimulated by SLbA ($P = 0.0417$; $r = 0.6527$) or SLcA ($P = 0.0460$; $r = 0.7042$).

Following LBSapSal vaccination, increased antigen-presenting cell (APC) counts gave rise to a lymphocyte activation profile associated with an up-regulation of both CD80 and MHC-I expression

Regarding the search for APC in dogs that had been vaccinated with LBSapSal, it was observed that the number of circulating CD14⁺ monocytes was higher ($P < 0.05$) at T1

in this group compared with the Sal group (Fig. 5, upper left panel). Alongside increased CD14⁺ monocyte counts, the lymphocyte activation status in the LBSapSal group exhibited increased ($P < 0.05$) mean fluorescence channel levels in gated lymphocytes for CD80 at T2 compared with the C and Sal groups (Fig. 5, upper middle panel), and for the cell surface marker MHC-I at T3 compared with the C group (Fig. 5, upper right panel). Additionally, the LBSal group showed a reduction ($P < 0.05$) in expression of MHC-I in lymphocytes at T1 compared with the C and Sal groups. Correlation analysis was employed to investigate the relationship between the increase in CD14⁺ monocytes (at T1) followed by the improvement in lymphocyte activation status (CD80 at T2 and MHC-I at T3) in the LBSapSal group (Fig. 5, middle panel). Interestingly, the increase in counts of CD14⁺ monocytes at T1 was positively correlated with the lymphocyte activation profile in respect of the differential expression of CD80 ($P = 0.0252$; $r = 0.9748$) at T2 and MHC-I ($P = 0.0241$; $r = 0.9759$) at T3. Further investigation revealed a positive correlation in the LBSapSal group between lymphocyte expression of CD80 at T2 and of MHC-I at T3 ($P = 0.0063$; $r = 0.9937$). These data point to the connectivity of events between APC and lymphocyte activation status, and also among lymphocyte activation profile markers during immunization with LBSapSal. In agreement with these findings, it was observed that dogs of the LBSapSal group displaying higher CD14⁺ monocyte counts at T1

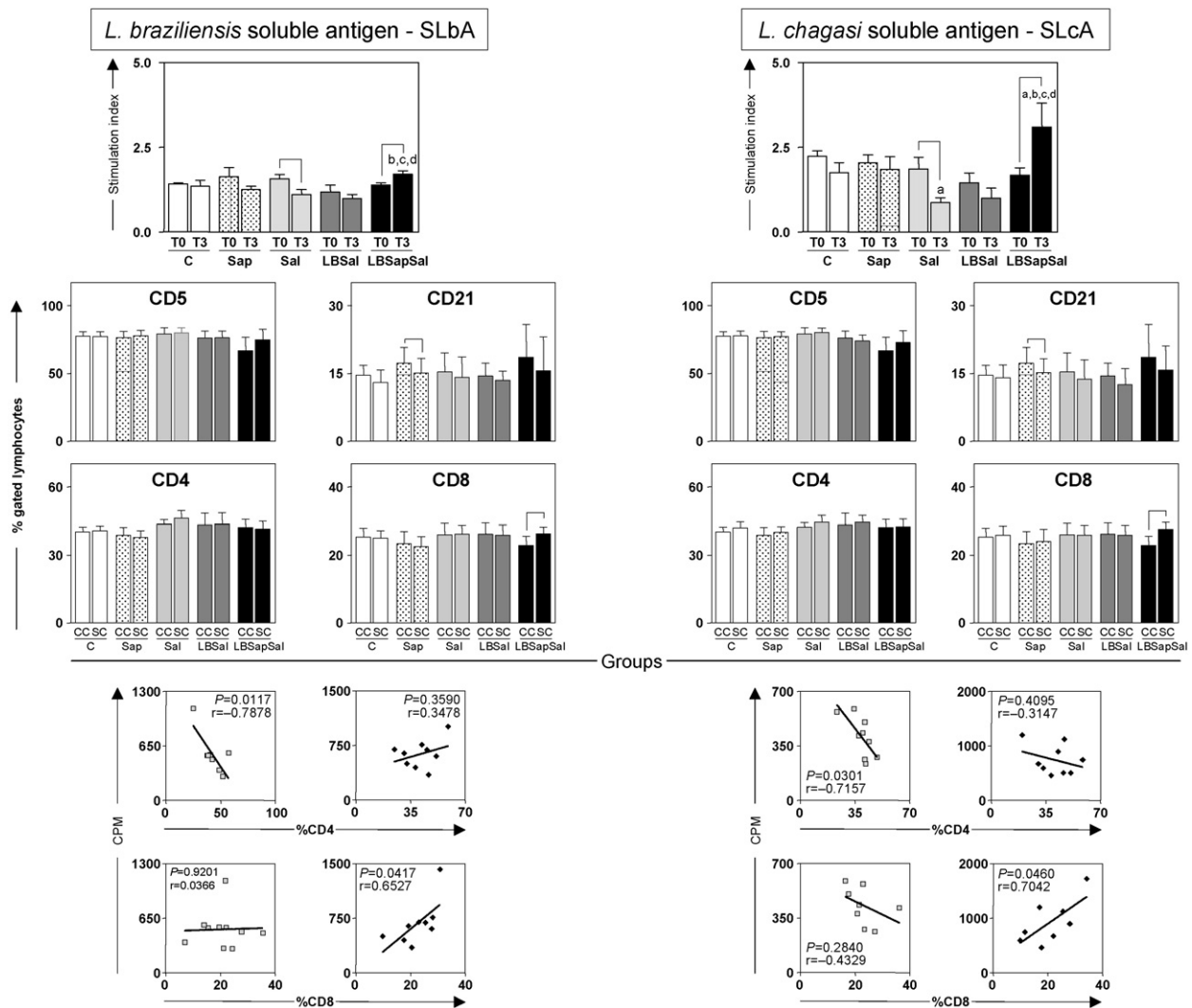


Figure 4 Cell proliferation response of peripheral blood mononuclear cells (PBMC) following stimulation with *Leishmania braziliensis* soluble antigen (SLBA) (upper left panel) and soluble *L. chagasi* antigen (SLcA) (upper right panel). Significant differences ($P < 0.05$) between values measured at T0 (before the first dose) and T3 (15 days after the third dose) are indicated by connecting lines. Significant differences ($P < 0.05$) between the LBSapSal group and the control C, Sap, Sal, and LBSal groups at T3 are indicated, respectively, by the letters a, b, c and d. The middle panel shows the immunophenotypic profile of PBMC *in vitro* following stimulation with SLBA (left panels) and SLcA (right panels) determined at T3 for treatment groups: C (control; □), Sap (saponin; ▨), Sal (SGE; ▩), LBSal (killed *L. braziliensis* vaccine plus SGE; ▣), and LBSapSal (killed *L. braziliensis* vaccine plus saponin plus SGE; ▤). The results are expressed as the mean frequencies of CD5⁺, CD21⁺, CD4⁺ and CD8⁺ cells in the non-stimulated cultures (CC; controls) and in the stimulated cultures (SC). Significant differences ($P < 0.05$) between values measured at T0 and T3 are indicated by connecting lines. The lower panel shows the correlations between cell proliferation (counts per minute; CPM) and frequency of CD4⁺ and CD8⁺ T-cells in PBMC *in vitro* cultures derived from the Sal (▩) and LBSapSal (▤) groups stimulated by SLBA (left panels) and SLcA (right panels) determined at T0 and T3 (r is the correlation index).

also exhibited the highest levels of expression of CD80 at T2 and MHC-I at T3 in lymphocytes (Fig. 5, middle right panel).

In order to identify the APC contribution, correlation analyses were performed during specific *in vitro* antigenic stimulation (Fig. 5, lower panel). The data revealed that vaccination with Sal resulted in negative correlations between CD14⁺ monocytes and *in vitro* cell proliferation in cultures stimulated by SLBA ($P = 0.0368$; $r = -0.7619$) or SLcA ($P = 0.0341$; $r = -0.8214$). In contrast, treatment with LBSap-

Sal elicited a positive correlation between CD14⁺ monocytes and *in vitro* cell proliferation in cultures stimulated by SLcA ($P = 0.0262$; $r = 0.7280$).

Enhanced NO concentration in serum was characteristic of the LBSapSal treatment

Since NO is considered to play a key role in mechanisms that mediate the elimination of intracellular pathogens, the

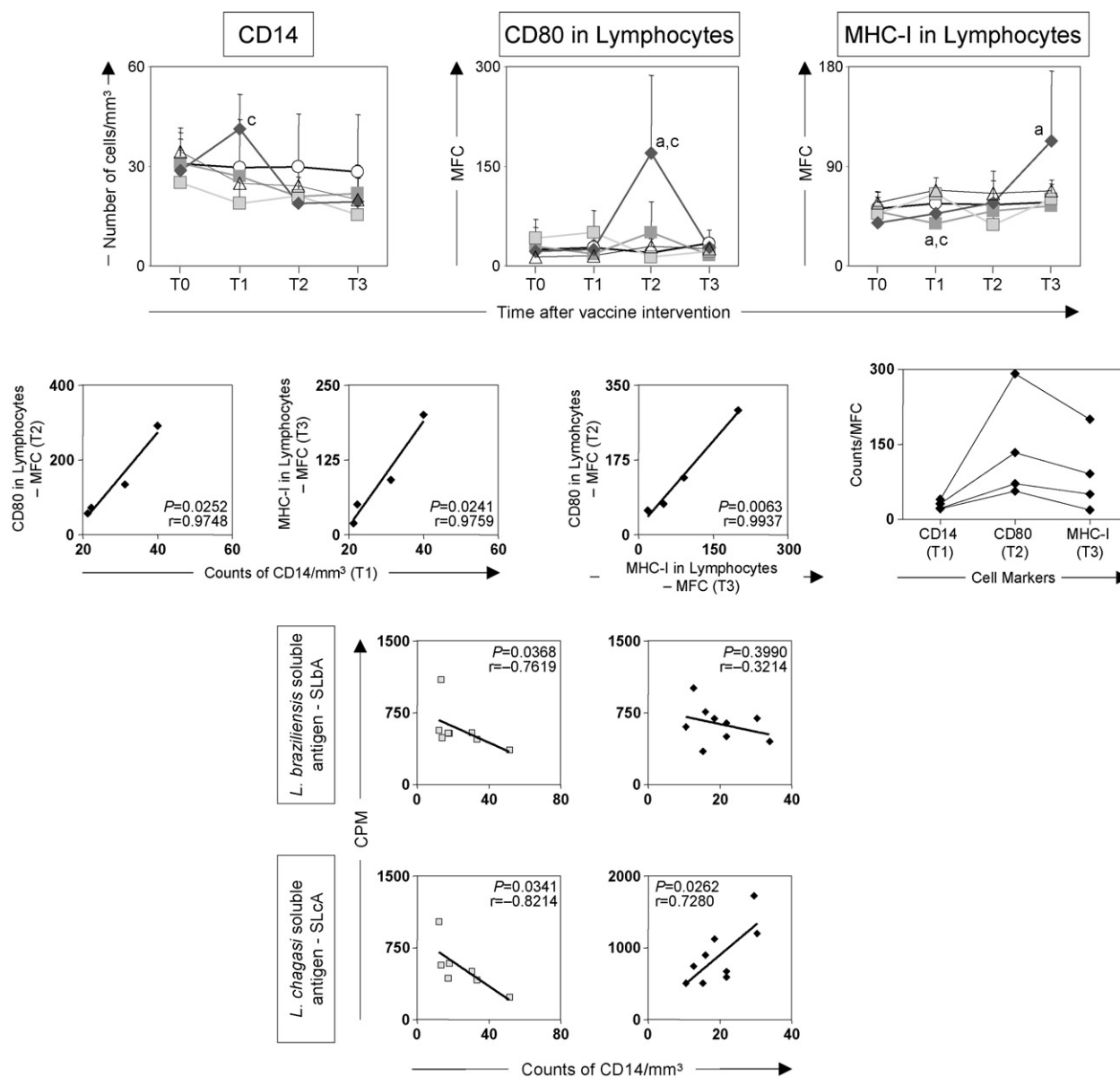


Figure 5 Analysis of antigen-presenting cells (evaluated as CD14⁺ monocytes) and lymphocyte activation status (CD80 and MHC-I expression in lymphocytes) in different vaccine groups: C (control; ○—○), Sap (saponin; △—△), Sal (SGE; □—□), LBSal (killed *Leishmania braziliensis* vaccine plus SGE; ■—■), and LBSapSal (killed *L. braziliensis* vaccine plus saponin plus SGE; ◆—◆). In the upper panel, significant differences ($P < 0.05$) with respect to the absolute counts of CD14⁺ monocytes, and CD80 and MHC-I expression in lymphocytes (reported as MFC values) are indicated by the letters a and c in comparison with the control C and Sal groups, respectively. The middle panel displays the correlations between CD14⁺ (at T1) cell counts and CD80 (at T2) or MHC-I (at T3) in lymphocytes, and between MHC-I and CD80 in lymphocytes in the LBSapSal group. The lower panel depicts the correlations between CD14⁺ absolute cell counts and *in vitro* cell proliferation (counts per minute; CPM) following stimulation by SLbA or SLcA (r is the correlation index).

levels of the anti-microbial oxidant produced in serum samples were determined. Progressively higher ($P < 0.05$) levels of the reactive NO radical were recorded in sera from the LBSapSal group at T1 and T2 compared with those of the C group, and at T3 compared with those of the C, Sap and Sal groups (Fig. 6). Additionally, the LBSal group presented increased ($P < 0.05$) levels of NO compared with the C, Sap and Sal groups at T3.

Discussion

The natural history of CVL, and the lesions characteristic of the disease, are similar in many respect to those described for human VL. For these reasons, the canine model is considered to offer an excellent system for application in studies concerned with leishmaniasis in man [47–49]. Moreover, the natural history of CVL has been well described, particularly

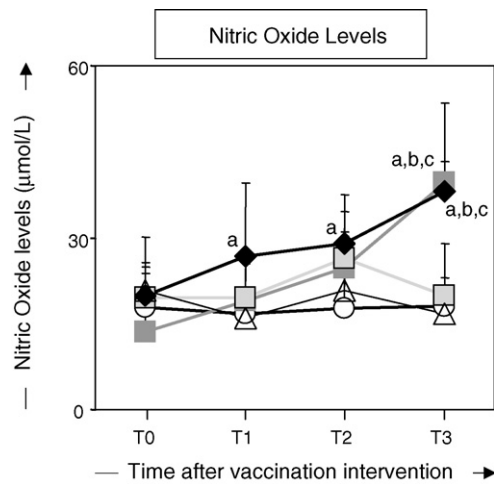


Figure 6 Levels of NO ($\mu\text{mol/L}$) in serum samples of dogs in different treatment groups: C (control; \circ), Sap (saponin; \triangle), Sal (SGE; \square), LBSal (killed *Leishmania braziliensis* vaccine plus SGE; \blacksquare), and LBSapSal (killed *L. braziliensis* vaccine plus saponin plus SGE; \blacklozenge) assayed at T0 (prior to the first dose), T1 (15 days after the first dose), T2 (15 days after the second dose), and T3 (15 days after the third dose). Significant differences ($P < 0.05$) in comparison with the control C, Sap and Sal groups are indicated, respectively, by the letters a, b and c.

in respect of the parasite load in different tissues and of the immunopathological changes relating to the progression of clinical forms [42,43,50–55]. Whilst such data have been valuable in developing tools employed in the evaluation of both chemotherapies and vaccines against CVL, current treatment strategies have failed to achieve a consistent parasitological cure for the disease owing to the presence of latently infected cells [56,57]. In this respect, a canine vaccine may represent the most practical and effective method by which to reduce the incidence of human VL, and it could also provide a basis for the development of a similar vaccine for humans [33–37].

A number of vaccines comprised of molecularly defined subunits, obtained by recombinant methodologies, have been shown to exhibit some degree of effectiveness against experimental leishmaniasis, especially in murine models [58–62]. Such an approach may not, however, accurately reflect efficacy in the dog [35,63,64] since a vaccine designed to protect dogs should clearly be developed using a canine model [30]. Since the saponin has previously used by Lasri et al. [29] in immunized dogs with *Leishmania* promastigotes vaccine, the inclusion of this adjuvant in FML formulation has shown strong immunogenicity in dogs [16,17,21,23,25]. Moreover, the remarkable results obtained following the antigens derived from parasite cultures (excreted/secreted antigens) [65] and vaccination of dogs with killed parasite vaccines were demonstrated in immunogenicity studies [29–31,66] as well as in challenge with *L. chagasi* [28] showing that a successful vaccine against CVL is still possible. In additional, in field assays using FML antigen [16] and purified excreted–secreted antigens of *L. infantum* [24] demonstrated encouraging efficacies results. With the aim of further improving immunoprotection against VL, the development of a vaccine containing components

present in the saliva of sand fly saliva has been suggested as a potential approach for the control of *Leishmania* infection [7,37,67,68].

There is a major consensus that *L. chagasi*/*L. infantum* antigens display a potent immunosuppressive potential that would be deleterious for the immunoprotection against CVL. Several studies have reported the potential of *L. chagasi* antigens to trigger immunosuppression by blocking the *in vitro* lymphoproliferative response to *Leishmania* antigens as well as the synthesis of pro-inflammatory cytokines by antigen-presenting cells [69,70]. The use of purified *L. donovani* and *L. infantum* antigens has been also proposed to overcome this immunosuppressive effect of *L. chagasi* antigens [16,20,24]. According Giunchetti et al. [30], most studies, including those clinical trials with vaccine candidates to CVL immunoprophylaxis have been conducted using either *L. amazonensis*, *L. braziliensis* or *L. major* antigens. Previous studies from our group have demonstrated that *L. braziliensis* antigen have a potent role in protecting *L. chagasi* infection in dogs (unpublished data). Therefore, a critical question for screening and development of anti-leishmanial vaccines in CVL is to define *Leishmania* antigens and adjuvant systems that elicit a favourable and sustained cytokine environment *in vivo*.

Considering the importance of immunoprophylaxis strategies for the control of leishmaniasis, and the lack of studies concerning the cellular and humoral events that occur during vaccination, we have attempted to evaluate the immune response of a promising new vaccine candidate against CVL composed of killed *L. braziliensis* vaccine plus saponin and salivary gland extract of *L. longipalpis* (LBSapSal). The assessment of such information is an essential pre-requisite to the understanding of mechanisms relating to immunogenicity elicited by candidate vaccines. In this context, we described the first work using sand fly salivary gland for the vaccination of dogs, which represents an important step in the obtaining of an effective vaccine against canine visceral leishmaniasis.

No general adverse reactions occurred following immunization with LBSapSal, and the local adverse reactions observed were minimal and comprised mild induration without the formation of ulcerated lesions. The presence of local reactions may be associated with the use of saponin as adjuvant. Although saponin is known to induce the development of strong CD8⁺ T-lymphocyte cytotoxicity [39,71,72], it is employed as an adjuvant in several veterinary vaccines [73]. Whilst non-specific immune reactions such as swelling or nodule formation, loss of pelage at the site of injection, anorexia, apathy, vomiting and diarrhoea have been reported [30,73–75], in the present study, the overall tolerance of the candidate vaccine in dogs appeared to be adequate.

Vaccination with LBSapSal alone elicited the production of elevated levels of anti-saliva total IgG, IgG1 and IgG2 at T3, whilst the lower amounts of anti-SGE immunoglobulin isotypes observed in the Sal and LBSal groups suggest a critical role of saponin adjuvant in inducing anti-saliva humoral response. The positive correlation between anti-saliva immunoglobulin isotypes, especially IgG1 and IgG2, indicate a mixed Th1/Th2 immune response following vaccination with LBSapSal. Moreover, it has been suggested that

a mixed anti-saliva response involving both Th1 and Th2 components in human subjects may help in establishing an anti-immune *L. chagasi* response [76]. Additionally, Western blot experiments showed predominance in the recognition of proteins with molecular weights of 35, 45 and 71 kDa, particularly following LBSapSal vaccination.

According to Valenzuela et al. [26], the cDNA from the salivary glands of the sand fly codes for a 71 kDa polypeptide that shows strong similarities to angiotensin converting enzyme (ACE) from *Anopheles gambiae*, *Drosophila melanogaster*, chicken and humans. However, the function of the sand fly saliva protein as a peptidase remains to be elucidated, and a 71 kDa anti-saliva immunoglobulin has not yet been detected in the sera of humans or dogs with VL. The 35 kDa saliva protein has been previously reported to be an apyrase related to the potent anti-platelet factors displayed by *L. longipalpis* and *Phlebotomus papatasi* [4,15,77,78]. Additionally, the 45 kDa protein has been described in the saliva of *L. longipalpis*, *P. papatasi*, *P. ariasi*, *P. argentipes* and *P. duboscqi* as a yellow-related protein [4,15,77–79], and is considered to be one of the most abundant proteins found in sand fly saliva [77]. The 35 and 45 kDa proteins have been proposed as vaccine candidates in the control of *L. chagasi* [37,76].

Sera from asymptomatic and symptomatic dogs from an area endemic for VL presented anti-saliva immunoglobulins that recognized saliva proteins of molecular weights 28.6 and 47.3 kDa. These proteins were identified, respectively, as a D7-related protein and a member of the yellow protein family, and have been proposed as candidates for the development of a multi-component vaccination in dogs [80].

The major saliva proteins recognized (according to Western blot analysis) by the sera of human subjects presenting anti-saliva IgG antibodies and anti-*Leishmania* delayed type hypersensitivity (DTH) response were of molecular weights 35 and 45 kDa [76], similar to those observed during immunization with LBSapSal. Additionally, a positive association has been proposed between anti-saliva IgG antibodies and anti-*Leishmania* DTH response, suggesting that the presence of anti-saliva immunoglobulin is linked to developing cell-mediated immunity against *Leishmania* [76,81,82]. In this respect, the present findings indicate that LBSapSal vaccination elicits improved anti-*Leishmania* immunity.

In the present study, higher amounts of anti-*Leishmania* total IgG, IgG1 and IgG2, and a higher IgG1/IgG2 ratio, were displayed in the LBSapSal group compared with the other groups. It has similarly been demonstrated that dogs immunized with killed *Leishmania* vaccine presented higher antibody production after the second vaccination, indicating a possible association between isotype production and cellular immune response [30,31]. It is important to mention that the association between IgG subtypes and the immune response in terms of the Th1/Th2 phenotype is not so straightforward in dogs [42,83–85], the findings of both immunoglobulin isotypes suggested that a mixed immune response is triggered by LBSapSal vaccination.

Analysis of circulating leukocytes through immunophenotypic evaluation was employed in order to assess cellular profiles following different vaccine treatments. The intense anti-*Leishmania* humoral immune response exhibited by the LBSapSal group was synchronous with increased numbers of

circulating CD21⁺ B-cells following the first immunization, resulting in the differentiation of plasmacytes and higher levels of immunoglobulin secretion as described previously in dogs that had been immunized with crude *Leishmania* antigen [30]. Additionally, the positive correlation between CD4⁺ T-cells and CD21⁺ B-cells suggests a possible cooperation in the activation of the humoral immune response in the LBSapSal group. Higher counts of circulating CD21⁺ B-cells have been previously associated with a resistance profile in CVL [51]. In addition, immunization with LBSal and LBSapSal elicited an increase in the numbers of CD5⁺ T-lymphocytes in the peripheral blood. However, this amplification was only related to T-cell subsets (CD4⁺ and CD8⁺ T-cells) in the LBSapSal group. Recently, a decrease in the circulating CD4⁺ T-cell count has been reported in dogs immunized with crude antigen plus Bacillus Calmete-Guérin (BCG) as adjuvant [31]. In contrast, another study in which dogs were immunized with *L. braziliensis* plus saponin as adjuvant revealed an increase in the number of circulating CD4⁺ T-cells [30]. In CVL, the increase in counts of circulating CD4⁺ and CD8⁺ T-cells has been described as the major phenotypic feature of the asymptomatic disease in dogs bearing low parasite loads [51]. Additionally, increased counts of circulating CD8⁺ T-cells have been associated with a resistance marker pattern during vaccination against *Leishmania* [30,31]. Thus, our findings support the hypothesis that immunization with LBSapSal elicits an increase in CD4⁺ and CD8⁺ T-lymphocytes that play a central role in protective immunity during *Leishmania* infection, as has been suggested previously for CVL [51,86].

The evaluation of activation markers in veterinary immunology is a new approach that has been supported by several investigations, and it has recently been proposed that MHC-I and MHC-II may be appropriate lymphocyte activation markers in dogs [30,51,54,87]. In this context, a close correlation between APC (evaluated as CD14⁺ monocytes) and lymphocyte activation status could be demonstrated following LBSapSal immunization. Interestingly, the early increase (at T1) of CD14⁺ monocytes in the LBSapSal group, followed by higher expression of CD80 (at T2) and MHC-I (at T3) in lymphocytes, were shown to be connected events. It is known that the up-regulation of MHC-I and -II are both related to the presence of interferon- γ [88,89]. In addition, the largest APC counts were associated with the highest expression of CD80 and MHC-I in lymphocytes, suggesting that this association could represent interaction between the innate and adaptive immune responses, reflecting an improvement in activation status during immunization with LBSapSal.

With the aim of determining whether the candidate vaccine would activate PBMC under *in vitro* antigenic stimulation, stimulation indices and antigen-specific immunophenotypic patterns were investigated. In the presence of SLbA or SLcA as *in vitro* stimulus, PBMC from dogs immunized with Sal presented lower stimulation indices at T3 compared with T0. Interestingly, a negative association was demonstrated between cell reactivity and CD4⁺ T-lymphocytes or CD14⁺ monocytes following *in vitro* stimulation in the Sal group. These data support the hypothesis that Sal treatment inhibits CD14⁺ monocytes in the promotion of CD4⁺ T-lymphocyte activation and the induction of cell proliferation. In fact, as previously described by Titus [90],

saliva from *L. longipalpis* suppresses the development of the CD4⁺ T-cell-specific sheep red blood cell (SRBC) proliferative response in mice immunized with SRBC antigen. In contrast, when *in vitro* cultures of PBMC derived from the LBSapSal group were stimulated with SLbA or SLcA, increased lymphoproliferation activity was accompanied by a higher frequency of CD8⁺ T-cells. These results support the hypothesis that CD8⁺ T-cells play a protective role in the mechanism of control of parasitism by *Leishmania* after LBSapSal treatment associated with the antigen-specific immune response to antigens from the etiological agent of CVL. Moreover, the lymphoproliferative response in the LBSapSal group was positively associated with APC and CD8⁺ T-cells following *in vitro* stimulation with SLcA or SLbA and SLcA, respectively. These findings indicate that the stimulation of antigen-specific T-cell subsets following LBSapSal immunization could contribute to improvements in the cellular immune response during *L. chagasi* infection.

Since NO is a key component in interferon- γ production, the levels of NO (as nitrite) were determined in the serum of the different immunization groups. The results showed a progressively higher production of NO levels that confirmed the potential resistance profile against *Leishmania* infection following LBSapSal vaccination.

The results presented in this study provide support for the continued development of vaccines based on the whole parasite approach. Such vaccines are attractive in terms of safety and stability of product compared with purified subunit preparations or DNA vaccines. Moreover, killed vaccines exhibit a greater diversity in antigenic repertoire with the potential to activate a stronger cellular response, mainly by T-lymphocytes, compared with those of purified subunit preparations or DNA vaccines. In addition, inclusion of sand fly saliva extract in vector-based vaccines appears to be advantageous by virtue of its potential to neutralize the anti-haemostatic and immunomodulatory effects of arthropod saliva that serve to enhance the ability of the pathogen to establish infection in the host. In the present study, sand fly saliva extract, in combination with killed *Leishmania* vaccine and saponin, elicited strong immunogenicity, with increased anti-saliva and anti-*Leishmania* immunoglobulin isotypes, together with higher counts of circulating CD8⁺ T-lymphocytes and SLcA-specific CD8⁺ T-lymphocytes, and high NO production. In conclusion, LBSapSal vaccine elicited a potential immune activation status that was potentially compatible with effective control of the etiological agent of CVL. Further investigations will focus on the efficacy of the LBSapSal vaccination in protection against experimental challenge with *L. chagasi*.

Acknowledgments

The study was supported by Fundação de Amparo à Pesquisa do Estado de Minas Gerais, Brazil (FAPEMIG grant: CBB CBB9202), PAPES IIIb (FIOCRUZ/RJ/2002) and CAPES. O.A.M.F., M.L. and R.C.O. are grateful to CNPq for fellowships. The authors wish to express their particular appreciation of the hard work carried out by the kennel staff of the Federal University of Ouro Preto and for their dedication during the execution of this project. The authors are also grateful for the use of the facilities at CEBIO, Univer-

sidade Federal de Minas Gerais, Rede Mineira de Bioterismo (FAPEMIG), and to Agrohealth Corporation and Chemitec Agro-Veterinária LTDA for support with the provision of medications. The authors also thank the Editone Company for the critical reading of the manuscript, editorial suggestions and changes.

References

- [1] Lainson R, Shaw JJ. Epidemiology and ecology of leishmaniasis in Latin-America. *Nature* 1978;273(5664):595–600.
- [2] Theodos CM, Ribeiro JM, Titus RG. Analysis of enhancing effect of sand fly saliva on *Leishmania* infection in mice. *Infect Immun* 1991;59(5):1592–8.
- [3] Lerner EA, Ribeiro JM, Nelson RJ, Lerner MR. Isolation of maxadilan, a potent vasodilatory peptide from the salivary glands of the sand fly *Lutzomyia longipalpis*. *J Biol Chem* 1991;266(17):11234–6.
- [4] Charlab R, Valenzuela JG, Rowton ED, Ribeiro JM. Toward an understanding of the biochemical and pharmacological complexity of the saliva of a haematophagous sand fly *Lutzomyia longipalpis*. *Proc Natl Acad Sci USA* 1999;96(26):15155–60.
- [5] Gillespie RD, Mbow ML, Titus RG. The immunomodulatory factors of blood feeding arthropod saliva. *Parasite Immunol* 2000;22(7):319–31.
- [6] Cavalcante RR, Pereira MH, Gontijo NF. Anti-complement activity in the saliva of phlebotomine sand flies and other haematophagous insects. *Parasitology* 2003;127(1):87–93.
- [7] Titus RG, Bishop JV, Mejia JS. The immunomodulatory factors of arthropod saliva and the potential for these factors to serve as vaccine targets to prevent pathogen transmission. *Parasite Immunol* 2006;28(4):131–41.
- [8] Titus RG, Ribeiro JM. Salivary gland lysates from the sand fly *Lutzomyia longipalpis* enhance *Leishmania* infectivity. *Science* 1988;239(4845):1306–8.
- [9] Samuelson J, Lerner E, Tesh R, Titus R. A mouse model of *Leishmania braziliensis braziliensis* infection produced by coinjection with sand fly saliva. *J Exp Med* 1991;173(1):49–54.
- [10] Warburg A, Saraiva E, Lanzaro GC, Titus RG, Neva F. Saliva of *Lutzomyia longipalpis* sibling species differs in its composition and capacity to enhance leishmaniasis. *Philos Trans R Soc B* 1994;345(1312):223–30.
- [11] Lima HC, Titus RG. Effects of sand fly vector saliva on development of cutaneous lesions and the immune response to *Leishmania braziliensis* in BALB/c mice. *Infect Immun* 1996;64(12):5442–5.
- [12] Belkaid Y, Kamhawi S, Modi G, Valenzuela J, Noben-Trauth N, Rowton E, et al. Development of a natural model of cutaneous leishmaniasis: powerful effects of vector saliva and saliva pre-exposure on the long-term outcome of *Leishmania major* infection in the mouse ear dermis. *J Exp Med* 1998;188(10):1941–53.
- [13] Kamhawi S, Belkaid Y, Modi G, Rowton E, Sacks D. Protection against cutaneous leishmaniasis resulting from bites of uninfected sand flies. *Science* 2000;290(5495):1351–4.
- [14] Morris RV, Shoemaker CB, David JR, Lanzaro GC, Titus RG. Sand-fly maxadilan exacerbates infection with *Leishmania major* and vaccinating against it protects against *L. major* infection. *J Immunol* 2001;167(9):5226–30.
- [15] Valenzuela JG, Belkaid Y, Garfield MK, Mendez S, Kamhawi S, Rowton ED, et al. Toward a defined anti-*Leishmania* vaccine targeting vector antigens: characterization of a protective salivary protein. *J Exp Med* 2001;194(3):331–42.
- [16] da Silva V, Borja-Cabrera GP, Correia Pontes NN, de Souza EP, Luz KG, Palatnik M, et al. A phase III trial of effi-

- cacy of the FML-vaccine against canine kala-azar in an endemic area of Brazil (Sao Goncalo do Amaranto RN). *Vaccine* 2000;19(9–10):1082–92.
- [17] Borja-Cabrera GP, Correia Pontes NN, da Silva VO, Paraguai de Souza E, Santos WR, Gomes EM, et al. Long lasting protection against canine kala-azar using the FML-QuilA saponin vaccine in an endemic area of Brazil (Sao Gonçalo do Amarante RN). *Vaccine* 2002;20(27–28):3277–84.
- [18] Ramiro MJ, Zarate JJ, Hanke T, Rodriguez D, Rodriguez JR, Esteban M, et al. Protection in dogs against visceral leishmaniasis caused by *Leishmania infantum* is achieved by immunization with a heterologous prime-boost regime using DNA and vaccinia recombinant vectors expressing LACK. *Vaccine* 2003;21(19–20):2474–84.
- [19] Mohebbi M, Khamesipour A, Mobedi I, Zarei Z, Hashemi-Fesharki R. Double-blind randomized efficacy field trial of alum precipitated autoclaved *Leishmania major* vaccine mixed with BCG against canine visceral leishmaniasis in Meshkin-Shahr district I.R. Iran. *Vaccine* 2004;22(29–30):4097–100.
- [20] Lemesre JL, Holzmuller P, Cavaleira M, Goncalves RB, Hottin G, Papierok G. Protection against experimental visceral leishmaniasis infection in dogs immunized with purified excreted secreted antigens of *Leishmania infantum* promastigotes. *Vaccine* 2005;23(22):2825–40.
- [21] Nogueira FS, Moreira MA, Borja-Cabrera GP, Santos FN, Menz I, Parra LE, et al. Leishmune vaccine blocks the transmission of canine visceral leishmaniasis: absence of *Leishmania* parasites in blood, skin and lymph nodes of vaccinated exposed dogs. *Vaccine* 2005;23(40):4805–10.
- [22] Rafati S, Nakhaee A, Taheri T, Taslimi Y, Darabi H, Eravani D, et al. Protective vaccination against experimental canine visceral leishmaniasis using a combination of DNA and protein immunization with cysteine proteinases type I and II of *L. infantum*. *Vaccine* 2005;23(28):3716–25.
- [23] Saraiva EM, de Figueiredo BA, Santos FN, Borja-Cabrera GP, Nico D, Souza LO, et al. The FML-vaccine (Leishmune) against canine visceral leishmaniasis: a transmission blocking vaccine. *Vaccine* 2006;24(13):2423–31.
- [24] Lemesre JL, Holzmuller P, Goncalves RB, Bourdoiseau G, Hugnet C, Cavaleira M, et al. Long-lasting protection against canine visceral leishmaniasis using the LiESAP-MDP vaccine in endemic areas of France: double-blind randomised efficacy field trial. *Vaccine* 2007;25(21):4223–34.
- [25] Santos FN, Borja-Cabrera GP, Miyashiro LM, Grechi J, Reis AB, Moreira MA, et al. Immunotherapy against experimental canine visceral leishmaniasis with the saponin enriched-Leishmune vaccine. *Vaccine* 2007;25(33):6176–90.
- [26] Valenzuela JG, Garfield M, Rowton ED, Pham VM. Identification of the most abundant secreted proteins from the salivary glands of the sand fly *Lutzomyia longipalpis*, vector of *Leishmania chagasi*. *J Exp Biol* 2004;207(21):3717–29.
- [27] Ravindran R, Ali N. Progress in vaccine research and possible effector mechanisms in visceral leishmaniasis. *Curr Mol Med* 2004;4(6):697–709.
- [28] Mayrink W, Genaro O, Silva JC, da Costa RT, Tafuri WL, Toledo VP, et al. Phase I and II open clinical trials of a vaccine against *Leishmania chagasi* infections in dogs. *Mem Inst Oswaldo Cruz* 1996;91(6):695–7.
- [29] Lasri S, Sahibi H, Sadak A, Jaffe CL, Rhalem A. Immune responses in vaccinated dogs with autoclaved *Leishmania major* promastigotes. *Vet Res* 1999;30(5):441–9.
- [30] Giunchetti RC, Correa-Oliveira R, Martins-Filho O, Teixeira-Carvalho A, Roatt BM, Aguiar-Soares RDO, et al. Immunogenicity of a killed *Leishmania* vaccine with saponin adjuvant in dogs. *Vaccine* 2007;25(44):7674–86.
- [31] Giunchetti RC, Reis AB, Silveira-Lemos D, Martins-Filho OA, Corrêa-Oliveira R, Bethony J, et al. Antigenicity of a whole parasite vaccine as promising candidate against canine leishmaniasis. *Res Vet Sci*, doi:10.1016/j.rvsc.2007.09.008.
- [32] Deane LM. Reservoirs of *Leishmania donovani* in Brazil. *Rev Assoc Med Bras* 1961;7:161–9.
- [33] Abranches P, Silva-Pereira MC, Conceicao-Silva FM, Santos-Gomes GM, Janz JG. Canine leishmaniasis: pathological and ecological factors influencing transmission of infection. *J Parasitol* 1991;77(4):557–61.
- [34] Hommel M, Jaffe CL, Travi B, Milon G. Experimental models for leishmaniasis and for testing anti-leishmanial vaccines. *Ann Trop Med Parasitol* 1995;89(Suppl. 1):55–73.
- [35] Gradoni L. An update on antileishmanial vaccine candidates and prospects for a canine *Leishmania* vaccine. *Vet Parasitol* 2001;100(1–2):87–103.
- [36] Muel J. Vaccination against *Leishmania* infections. *Curr Drug Targets Immune Endocr Metabol Disord* 2002;2(3):201–26.
- [37] Brodskyn C, de Oliveira CI, Barral A, Barral-Netto M. Vaccines in leishmaniasis: advances in the last five years. *Expert Rev Vaccines* 2003;2(5):705–17.
- [38] Modi GB, Tesh RB. A simple technique for mass rearing *Lutzomyia longipalpis* and *Phlebotomus papatasi* (Diptera: Psychodidae) in the laboratory. *J Med Entomol* 1983;20(5):568–9.
- [39] Borja-Cabrera GP, Cruz-Mendes A, Paraguai de Souza E, Hashimoto-Okada LY, de Trivellato FA, Kawasaki JK, et al. Effective immunotherapy against canine visceral leishmaniasis with the FML-vaccine. *Vaccine* 2004;22(17–18):2234–43.
- [40] Santos WR, Aguiar IA, Paraguai de Souza E, de Lima VM, Palatnik M, Palatnik-de-Sousa CB. Immunotherapy against murine experimental visceral leishmaniasis with the FML-vaccine. *Vaccine* 2003;21(32):4668–76.
- [41] Oliveira-Freitas E, Casas CP, Borja-Cabrera GP, Santos FN, Nico D, Souza LO, et al. Acylated and deacylated saponins of *Quilajia saponaria* mixture as adjuvants for the FML-vaccine against visceral leishmaniasis. *Vaccine* 2006;24(18):3909–20.
- [42] Reis AB, Teixeira-Carvalho A, Vale AM, Marques MJ, Giunchetti RC, Mayrink W, et al. Isotype patterns of immunoglobulins: hallmarks for clinical status and tissue parasite density in Brazilian dogs naturally infected by *Leishmania (Leishmania) chagasi*. *Vet Immunol Immunopathol* 2006;112(3–4):102–16.
- [43] Reis AB, Martins-Filho OA, Teixeira-Carvalho A, Carvalho MG, Mayrink W, Franca-Silva JC, et al. Parasite density and impaired biochemical/hematological status are associated with severe clinical aspects of canine visceral leishmaniasis. *Res Vet, Sci* 2006;81(1):68–75.
- [44] Reis AB, Carneiro CM, Carvalho MG, Teixeira-Carvalho A, Giunchetti RC, Mayrink W, et al. Establishment of a microplate assay for flow cytometric assessment and its use for the evaluation of age-related phenotypic changes in canine whole blood leukocytes. *Vet Immunol Immunopathol* 2005;103(3–4):173–85.
- [45] Green LC, Wagner DA, Glogowski J, Skipper PL, Wishnok JS, Tannenbaum SR. Analysis of nitrate, nitrite, and [¹⁵N]-nitrate in biological fluids. *Anal Biochem* 1982;126(1):131–8.
- [46] Gutman SI, Hollywood CA. Simple, rapid method for determining nitrates and nitrites in biological fluids. *Clin Chem* 1992;38(10):2152.
- [47] Keenan CM, Hendricks LD, Lightner L, Webster HK, Johnson AJ. Visceral leishmaniasis in the German shepherd dog. I. Infection, clinical disease, and clinical pathology. *Vet Pathol* 1984;21(1):74–9.
- [48] Moreno J, Alvar J. Canine leishmaniasis: epidemiological risk and the experimental model. *Trends Parasitol* 2002;18(9):399–405.
- [49] Alvar J, Canavate C, Molina R, Moreno J, Nieto J. Canine leishmaniasis. *Adv Parasitol* 2004;57:1–88.

- [50] Chamizo C, Moreno J, Alvar J. Semi-quantitative analysis of cytokine expression in asymptomatic canine leishmaniasis. *Vet Immunol Immunopathol* 2005;103(1–2):67–75.
- [51] Reis AB, Teixeira-Carvalho A, Giunchetti RC, Guerra LL, Carvalho MG, Mayrink W, et al. Phenotypic features of circulating leucocytes as immunological markers for clinical status and bone marrow parasite density in dogs naturally infected by *Leishmania chagasi*. *Clin Exp Immunol* 2006;146(2):303–11.
- [52] Giunchetti RC, Mayrink W, Genaro O, Carneiro CM, Correa-Oliveira R, Martins-Filho OA, et al. Relationship between canine visceral leishmaniasis and the *Leishmania (Leishmania) chagasi* burden in dermal inflammatory foci. *J Comp Pathol* 2006;135(2–3):100–7.
- [53] Giunchetti RC, Mayrink W, Carneiro CM, Correa-Oliveira R, Martins-Filho OA, Marques MJ, et al. Histopathological and immunohistochemical investigations of the hepatic compartment associated with parasitism and serum biochemical changes in canine visceral leishmaniasis. *Res Vet Sci* 2008;84(2):269–77.
- [54] Giunchetti RC, Martins-Filho O, Carneiro CM, Mayrink W, Marques MJ, Tafuri WL, et al. Histopathology, parasite density and cell phenotypes of the popliteal lymph node in canine visceral leishmaniasis. *Vet Immunol Immunopathol* 2008;121(1):23–33.
- [55] Lage RS, Oliveira GC, Busek SU, Guerra LL, Giunchetti RC, Correa-Oliveira R, et al. Analysis of the cytokine profile in spleen cells from dogs naturally infected by *Leishmania chagasi*. *Vet Immunol Immunopathol* 2007;115(1–2):135–45.
- [56] Baneth G, Shaw SE. Chemotherapy of canine leishmaniasis. *Vet Parasitol* 2002;106(4):315–24.
- [57] Noli C, Auxilia ST. Treatment of canine Old World visceral leishmaniasis: a systematic review. *Vet Dermatol* 2005;16(4):213–32.
- [58] Wilson ME, Young BM, Andersen KP, Weinstock JV, Metwali A, Ali KM, et al. A recombinant *Leishmania chagasi* antigen that stimulates cellular immune responses in infected mice. *Infect Immun* 1995;63(5):2062–9.
- [59] Webb JR, Kaufmann D, Campos-Neto A, Reed SG. Molecular cloning of a novel protein antigen of *Leishmania major* that elicits a potent immune response in experimental murine leishmaniasis. *J Immunol* 1996;157(11):5034–41.
- [60] Webb JR, Campos-Neto A, Ovendale PJ, Martin TI, Stromberg EJ, Badaro R, et al. Human and murine immune responses to a novel *Leishmania major* recombinant protein encoded by members of a multicopy gene family. *Infect Immun* 1998;66(7):3279–89.
- [61] Dole VS, Raj VS, Ghosh A, Madhubala R, Myler PJ, Stuart KD. Immunization with recombinant LD1 antigens protects against experimental leishmaniasis. *Vaccine* 2000;19(4–5):423–30.
- [62] Campos-Neto A, Porrozzi R, Greeson K, Coler RN, Webb JR, Seiky Y, et al. Protection against cutaneous leishmaniasis induced by recombinant antigens in murine and nonhuman primate models of the human disease. *Infect Immun* 2001;69(6):4103–8.
- [63] Requena JM, Iborra S, Carrion J, Alonso C, Soto M. Recent advances in vaccines for leishmaniasis. *Expert Opin Biol Ther* 2004;4(9):1505–17.
- [64] Khamesipour A, Rafati S, Davoudi N, Maboudi F, Modabber F. Leishmaniasis vaccine candidates for development: a global overview. *Indian J Med Res* 2006;123(3):423–38.
- [65] Holzmuller P, Cavaleyra M, Moreaux J, Kovacic R, Vincendeau P, Papierok G, et al. Lymphocytes of dogs immunised with purified excreted–secreted antigens of *Leishmania infantum* co-incubated with *Leishmania*-infected macrophages produce IFN gamma resulting in nitric oxide-mediated amastigote apoptosis. *Vet Immunol Immunopathol* 2005;106(3–4):247–57.
- [66] Panaro MA, Acquafredda A, Lisi S, Lofrumento DD, Mitolo V, Sisto M, et al. Nitric oxide production by macrophages of dogs vaccinated with killed *Leishmania infantum* promastigotes. *Comp Immunol Microbiol Infect Dis* 2001;24(3):187–95.
- [67] Kamhawi S. The biological and immunomodulatory properties of sand fly saliva and its role in the establishment of *Leishmania* infections. *Microbes Infect* 2000;2(14):1765–73.
- [68] Mejia JS, Bishop JV, Titus RG. Is it possible to develop panarthropod vaccines? *Trends Parasitol* 2006;22(8):367–70.
- [69] Carvalho EM, Badaro R, Reed SG, Jones TC, Johnson Jr WD. Absence of gamma interferon and interleukin 2 production during active visceral leishmaniasis. *J Clin Invest* 1985;76:2066–9.
- [70] Peruhype-Magalhaes V, Martins-Filho OA, Prata A, Silva Lde A, Rabello A, Teixeira-Carvalho A, et al. Mixed inflammatory/regulatory cytokine profile marked by simultaneous raise of interferon-gamma and interleukin-10 and low frequency of tumour necrosis factor-alpha(+) monocytes are hallmarks of active human visceral Leishmaniasis due to *Leishmania chagasi* infection. *Clin Exp Immunol* 2006;146:124–32.
- [71] Marciani DJ. Vaccine adjuvants: role and mechanisms of action in vaccine immunogenicity. *Drug Discov Today* 2003;8(20):934–43.
- [72] Kensil CR. Saponins as vaccine adjuvants. *Crit Rev Ther Drug Carrier Syst* 1996;13(1–2):1–55.
- [73] Rajput ZI, Hu SH, Xiao CW, Arijio AG. Adjuvant effects of saponins on animal immune responses. *J Zhejiang Univ Sci B* 2007;8(3):153–61.
- [74] Santos WR, de Lima VM, de Souza EP, Bernardo RR, Palatnik M, Palatnik de Sousa CB. Saponins IL12 and BCG adjuvant in the FML-vaccine formulation against murine visceral leishmaniasis. *Vaccine* 2002;21(1–2):30–43.
- [75] Parra LE, Borja-Cabrera GP, Santos FN, Souza LO, Palatnik-de-Sousa CB, Menz I. Safety trial using the Leishmune vaccine against canine visceral leishmaniasis in Brazil. *Vaccine* 2007;25(12):2180–6.
- [76] Gomes RB, Brodskyn C, de Oliveira CI, Costa J, Miranda JC, Caldas A, et al. Seroconversion against *Lutzomyia longipalpis* saliva concurrent with the development of anti-*Leishmania chagasi* delayed-type hypersensitivity. *J Infect Dis* 2002;186(10):1530–4.
- [77] Anderson JM, Oliveira F, Kamhawi S, Mans BJ, Reynoso D, Seitz AE, et al. Comparative salivary gland transcriptomics of sandfly vectors of visceral leishmaniasis. *BMC Genomics* 2006;7(52):1–23.
- [78] Kato H, Anderson JM, Kamhawi S, Oliveira F, Lawyer PG, Pham VM, et al. High degree of conservancy among secreted salivary gland proteins from two geographically distant *Phlebotomus duboscqi* sandfly populations (Mali and Kenya). *BMC Genomics* 2006;7(226):1–21.
- [79] Oliveira F, Kamhawi S, Seitz AE, Pham VM, Guigal PM, Fischer L, et al. From transcriptome to immunome: identification of DTH inducing proteins from a *Phlebotomus ariasi* salivary gland cDNA library. *Vaccine* 2006;24(3):374–90.
- [80] Bahia D, Gontijo NF, Leon IR, Perales J, Pereira MH, Oliveira G, et al. Antibodies from dogs with canine visceral leishmaniasis recognise two proteins from the saliva of *Lutzomyia longipalpis*. *Parasitol Res* 2007;100(3):449–54.
- [81] Barral A, Honda E, Caldas A, Costa J, Vinhas V, Rowton ED, et al. Human immune response to sand fly salivary gland antigens: a useful epidemiological marker? *Am J Trop Med Hyg* 2000;62(6):740–5.
- [82] Andrade BB, de Oliveira CI, Brodskyn CI, Barral A, Barral-Netto M. Role of sand fly saliva in human and experimental leishmaniasis: current insights. *Scand J Immunol* 2007;66(2–3):122–7.
- [83] Bourdoiseau G, Bonnefont C, Hoareau E, Boehringer C, Stolle T, Chabanne L. Specific IgG1 and IgG2 antibody and lymphocyte subset levels in naturally *Leishmania infantum*-infected treated and untreated dogs. *Vet Immunol Immunopathol* 1997;59(1–2):21–30.

- [84] Courtenay O, Quinnell RJ, Garcez LM, Shaw JJ, Dye C. Infectiousness in a cohort of brazilian dogs: why culling fails to control visceral leishmaniasis in areas of high transmission. *J Infect Dis* 2002;186(9):1314–20.
- [85] Day MJ. Immunoglobulin G subclass distribution in canine leishmaniasis: a review and analysis of pitfalls in interpretation. *Vet Parasitol* 2007;147(1–2):2–8.
- [86] Pinelli E. Cytokines in canine visceral leishmaniasis. In: Schijns VECJ, Horzinek MC, editors. *Cytokines in veterinary medicine*. Wallingford: CAB International; 1997. p. 217–47.
- [87] Cobbold S, Metcalfe S. Monoclonal antibodies that define canine homologues of human CD antigens: Summary of the First International Canine Leukocyte Antigen Workshop (CLAW). *Tissue Antigens* 1994;43(3):137–54.
- [88] Whitley EM, Bird AC, Zucker KE, Wolfe LG. Modulation by canine interferon-gamma of major histocompatibility complex and tumor-associated antigen expression in canine mammary tumor and melanoma cell lines. *Anticancer Res* 1995;15(3):923–9.
- [89] Radosevich TJ, Seregina T, Link CJ. Effective suppression of class I major histocompatibility complex by the US11 or ICP47 genes can be limited by cell type or interferon-gamma exposure. *Hum Gene Ther* 2003;14(18):1765–75.
- [90] Titus RG. Salivary gland lysate from the sand fly *Lutzomyia longipalpis* suppresses the immune response of mice to sheep red blood cells in vivo and concanavalin A *in vitro*. *Exp Parasitol* 1998;89(1):133–6.