

# Comparative Bioavailability of a Generic and Two Compounded Naproxen Sodium Suspensions Administered to Rats

Lílian Grace da Silva Solon<sup>1</sup>, Gerlane Bernardo Coelho Guerra<sup>2</sup>, Aurigena Antunes de Araújo<sup>2\*</sup>, José Mário Barichello<sup>3</sup>, José Pérez-Urizar<sup>4</sup> and Luiz Alberto Lira Soares<sup>5</sup>

<sup>1</sup>Department of Pharmacy, Universidade Federal do Rio Grande do Norte, Natal, Brazil

<sup>2</sup>Department of Biophysics and Pharmacology, Universidade Federal do Rio Grande do Norte, Natal, Brazil

<sup>3</sup>Department of Medicines, Universidade Federal da Bahia, Salvador, Brazil

<sup>4</sup>Pharmacology and Physiology Laboratory, Universidad Autónoma de San Luis Potosí, SLP, Mexico

<sup>5</sup>Department of Pharmacy, Universidade Federal de Pernambuco, Recife, Brazil

## Abstract

The purpose of this study was to determine naproxen concentrations in rat plasma samples by HPLC and to compare the bioavailability of a generic and two compounded naproxen sodium suspensions (test 1 and test 2). Analysis was run at a flow rate of 1.2 mL.min<sup>-1</sup> with a mobile phase of acetonitrile: NaH<sub>2</sub>PO<sub>4</sub> 0.01 M pH 4.00 (50:50, v/v) at 280 nm, using a C<sub>18</sub> column (150 mm x 4.6 mm, 5 μm). The calibration curve was linear (R<sup>2</sup> = 0.9987) over the range of 0.25 - 200 μg.mL<sup>-1</sup>. The precision for inter and intra-day analysis ranged from 2.46% to 12.39%. C<sub>max</sub>, T<sub>max</sub> and AUC<sub>t</sub> were 191.25 ± 11.17 μg.mL<sup>-1</sup>, 1.00 ± 0.106 h and 2438.16 ± 291.34 μg.h.mL<sup>-1</sup> for the reference drug, 188.22 ± 24.78 μg.mL<sup>-1</sup>, 1.06 ± 0.092 h and 1755.02 ± 228.90 μg.h.mL<sup>-1</sup> for test 1, and 160.50 ± 10.58 μg.mL<sup>-1</sup>, 0.66 ± 0.102 h and 1955.28 ± 142.80 μg.h.mL<sup>-1</sup> for test 2. No significant differences were found based on analysis of variance, with mean values and 90% CI of test2/reference ratio (C<sub>max</sub> 83.92% and AUC<sub>t</sub> 80.19%). For test1/reference ratio, the result was C<sub>max</sub> 98.41% and AUC<sub>t</sub> 71.98%. Based on these results, it can be concluded that the validated method was successfully applied to this study; the test 1 formulation failed to demonstrate a bioequivalence to the reference drug; however, the test 2 and reference naproxen sodium suspension were bioequivalent in terms of the rate and extent of absorption under these conditions.

**Keywords:** Bioavailability studies; Validation; HPLC; Pharmacokinetics; Compounded naproxen sodium suspension

## Introduction

According to Anfarmag (Associação Nacional de Farmacêuticos Magistrais) the turnover of compounded medicines is very high in Brazil. In 2008, the sales amounted to R\$1.2bil (Redação Anfarmag, 2009). The large consumption of these medicines by the Brazilian population has raised the suspicion of the quality and safety of these drugs, since cases of toxicity and death were reported by the National Agency of Health Vigilance (ANVISA, 2008). Compounded naproxen sodium suspension is highly used by the children in Brazil (Redação Anfarmag, 2009). This over-the-counter (OTC) drug is safety but these compounded medicines have possible risks of variable bioavailability due to differences among formulations. Despite frequent inspections of Brazilian compounding pharmacies, there is not a strict quality control that involves *in vivo* tests.

Structurally naproxen is a propionic acid derivative related to the arylacetic group of nonsteroidal anti-inflammatory drugs (NSAIDs) (Valentovic, 2008). Member drugs of the NSAID group act by inhibiting prostaglandin biosynthesis and share several adverse effects including gastrointestinal bleeding and ulceration (Boynton et al., 1988; Brodgen et al., 1979; Aronson, 2006; Marta et al, 2007). Several high-performance liquid chromatography (HPLC) methods have been developed for naproxen determination in human or rat plasma for pharmacokinetic studies (Cakrt et al, 2001; Costi et al, 2008; Attia, 2009; Hearan Suh et al., 1995; Farrar et al, 2002; Martin, 1999; Paino et al, 2005; Zakeri-Milani et al, 2005). Nevertheless, there is a need to improve these methods in terms of ease of sample handling and analysis time. Many naproxen products are used in worldwide, but there is no bioavailability data concerning naproxen compounded formulations.

The aim of this study was to determine naproxen concentrations in rat plasma samples and to investigate the pharmacokinetic

parameters of three different oral suspensions of naproxen sodium (one manufactured suspension and two compounded formulations) in order to compare their bioavailability.

## Experimental

### Chemicals and reagents

The reference material naproxen with a purity 100.3% was purchased from DEG Importação de Produtos Químicos LTDA, Brazil. The internal standard, diclofenac sodium {2-[2-(2,6-dichlorophenylamino) phenyl] acetic acid} with a purity 99.6% was obtained from All Chemistry Produtos Naturais & Farmacêuticos, Brazil. All other chemicals were of HPLC grade. Milli-Q water (Millipore Corporation, Bedford, MA) was used for NaH<sub>2</sub>PO<sub>4</sub> buffer preparation. The generic naproxen formulation (25 mg mL<sup>-1</sup>) was produced by Syntex S.A., Mexico. The two test naproxen sodium oral suspensions, test 1 (suspension A, 25 mg mL<sup>-1</sup>) and test 2 (suspension B, 25 mg mL<sup>-1</sup>) were obtained from two different compounding pharmacies, A and B respectively, in Natal, Brazil.

### Equipment and analysis conditions

Analyses were performed with a Varian ProStar HPLC system

\*Corresponding authors: Aurigena Antunes de Araújo, Departamento de Biofísica e Farmacologia - Centro de Biociências Av. Senador Salgado Filho, S/N - Lagoa Nova, 59078-900 - Natal - RN, Brazil, Tel: +55 84 32153419; Fax: +55 84 32153402; E-mail: [aurigena@ufrnet.br](mailto:aurigena@ufrnet.br)

Received March 30, 2010; Accepted April 23, 2010; Published April 23, 2010

**Citation:** Silva Solon LG, Coelho Guerra GB, Araújo AA, Barichello JM, Pérez-Urizar J, et al. (2010) Comparative Bioavailability of a Generic and Two Compounded Naproxen Sodium Suspensions Administered to Rats. J Bioanal Biomed 2: 048-054. doi:10.4172/1948-593X.1000021

**Copyright:** © 2010 Silva Solon LG, et al. This is an open-access article distributed under the terms of the Creative Commons Attribution License, which permits unrestricted use, distribution, and reproduction in any medium, provided the original author and source are credited.



(Varian, USA) including a quaternary pump (ProStar 240 model), auto-sampler (ProStar 410 model), variable wavelength PDA detector (ProStar 335 model), a thermostated column compartment and the Varian software Galaxie Chromatography Data System, Version 1.9.302.530.

Chromatographic separations were via an ACE C18 column (150 mm x 4,6 mm, 5  $\mu$ m, ACE, USA) coupled with a ACE RP guard column (4 mm x 4,6 mm, 5  $\mu$ m, ACE, USA) at room temperature. Elution for the analytes were through isocratic flow of acetonitrile: NaH<sub>2</sub>PO<sub>4</sub> 0.01 M pH 4.00 (50:50, v/v). The mobile phase was filtered through a 0.45  $\mu$ m filter and degassed before use. The flow rate of the mobile phase was maintained at 1.2 mL min<sup>-1</sup>. The detection wavelength was set at UV 280 nm and the injection volume was 20  $\mu$ L.

### Stock and working standard solutions

The stock solution of naproxen (1 mg mL<sup>-1</sup>) and the internal standard (1 mg mL<sup>-1</sup>) were prepared by dissolving the appropriate amount of the pure solid in acetonitrile. Both stock solutions were stored in a - 80°C freezer. The working standard solutions of naproxen were prepared fresh by step-wise dilutions of the above stock solution with the mobile phase to provide a calibration concentration range of 0.25 – 200  $\mu$ g mL<sup>-1</sup> when spiked into drug-free rat plasma. The working internal standard solution was prepared from the stock by dilution with mobile phase to 50  $\mu$ g mL<sup>-1</sup>.

Four quality control samples (QC), were prepared from the stock solutions by spiking naproxen into drug-free rat plasma to obtain final concentrations of 0.5, 15, 75 and 150  $\mu$ g mL<sup>-1</sup>. Routine calibration curves consisting of 0.25, 1, 5, 10, 20, 40, 100 and 200  $\mu$ g mL<sup>-1</sup> calibrators were generated together with the QC for computation of naproxen concentrations in rat samples using peak area ratios of naproxen and internal standard.

### Animals handling and sample collection

Wistar rats weighing 280 – 300 g were obtained from the Bioscience Center of Universidade Federal do Rio Grande do Norte (Natal, Brazil). They were acclimated and housed in cages at a temperature of 25°C with free access of standard laboratory food and water. Twelve hours before the initiation of experiments, food was withheld, but animals had free access to water. All handling and experimentation were according to protocols approved by the institutional care and use of laboratory animals committee.

Naproxen sodium suspension was orally administered to rats at a dose of 50 mg kg<sup>-1</sup>. The animals were anesthetized with 15 mg kg<sup>-1</sup> of xilazine hydrochloride (20 mg mL<sup>-1</sup>) and 100 mg kg<sup>-1</sup> of ketamina hydrochloride (50 mg mL<sup>-1</sup>) through an i.p. route. Blood samples were taken from the tails at time intervals of 10, 20, 40, 60 min, 3, 4, 6, 24 and 48 h. At each time point, blood samples were collected from five rats to compute the mean concentration. Since only a maximum of 3 - 4 samples of 500  $\mu$ L each could be sampled from a rat over a short time, three groups of five rats were needed to complete the full sampling intervals. The blood samples were collected into heparin-coated tubes and maintained on ice for a short time before spinning in a microcentrifuge at 4°C to harvest the plasma samples, which were immediately stored at - 80°C until analysis.

### Clean up of plasma samples

150  $\mu$ L of plasma obtained from dosed animals was mixed with 25  $\mu$ L of internal standard solution, 50  $\mu$ L of NaH<sub>2</sub>PO<sub>4</sub> 0.5 M pH 2,2 and NaCl for 1 minute. 250  $\mu$ L of acetonitrile was then added and the

sample vortexed for 3 minutes. For the calibration and quality control samples, 25  $\mu$ L of their respective working standards prepared in acetonitrile : NaH<sub>2</sub>PO<sub>4</sub> 0.01 M pH 4.00 (50:50, v/v) were added to each 150  $\mu$ L of free-drug plasma before mixing with internal standard solution. NaCl and acetonitrile in the mixture precipitated the plasma proteins. The mixture was then centrifuged at 10,000 rpm at 4°C for 5 minutes, and the supernatant containing the extracted naproxen and the internal standard was then filtered through 0.45  $\mu$ m and transferred to the auto-sampler of the HPLC for analyses.

### Method validation

The method was validated according to the “Guidance for Industry” under the section of “Bioanalytical Method Validation” by the Food and Drug Administration of USA (FDA, 2001).

### Selectivity and linearity

The selectivity of the method was assessed by determining that endogenous substances and the anesthetics present in rat plasma do not co-elute with naproxen and the internal standard in the HPLC method.

Normal and hemolysate plasma samples from at least six untreated rats were used to verify the selectivity of the bioanalytical method.

To evaluate the linearity of the calibration curves, eight calibration standards containing naproxen at nominal concentrations of 0.25, 1, 5, 10, 20, 40, 100 and 200  $\mu$ g mL<sup>-1</sup> were prepared as described in section 2.3. The standard calibration curves were constructed using naproxen/internal standard peak-area ratios vs. the nominal concentration by linear regression.

### Precision, accuracy and recovery

Assay precision was assessed by determining the coefficients of variation (CV) of the four QC samples (concentrations of 0.5, 15, 75 and 150  $\mu$ g mL<sup>-1</sup>) within the same analysis ( $n=5$ , intra-day precision) and over a series of analyses ( $n=5$ , inter-day precision). Both intra-day and inter-day precision were calculated with the following formula:

$$CV \% = \left[ \frac{\text{standard deviation}}{\text{mean}} \right] \times 100$$

Relative accuracy was determined by calculating the percent accuracy by the equation:

$$\text{Accuracy \%} = \left[ \frac{\text{mean measured concentration}}{\text{nominal concentration}} \right] \times 100$$

The precision and accuracy of the first calibrator of 0.25  $\mu$ g mL<sup>-1</sup>, lower limit of quantification (LLOQ) were also evaluated.

The recovery experiments in this study were performed by comparing peak areas of naproxen and internal standard in spiked plasma samples, extracted by the method described in section 2.5. The compounds of interest at concentrations corresponding to 100% recovery were added to similarly post-extracted blank plasma.

### Stability

The stability of naproxen in rat plasma was tested in three freeze-thaw cycles with QC samples at four concentration levels. These samples were stored frozen at -20°C and analyzed on days 0, 1 and 5 to give the evaluations.

Specifically, the long term stability of the samples when stored at

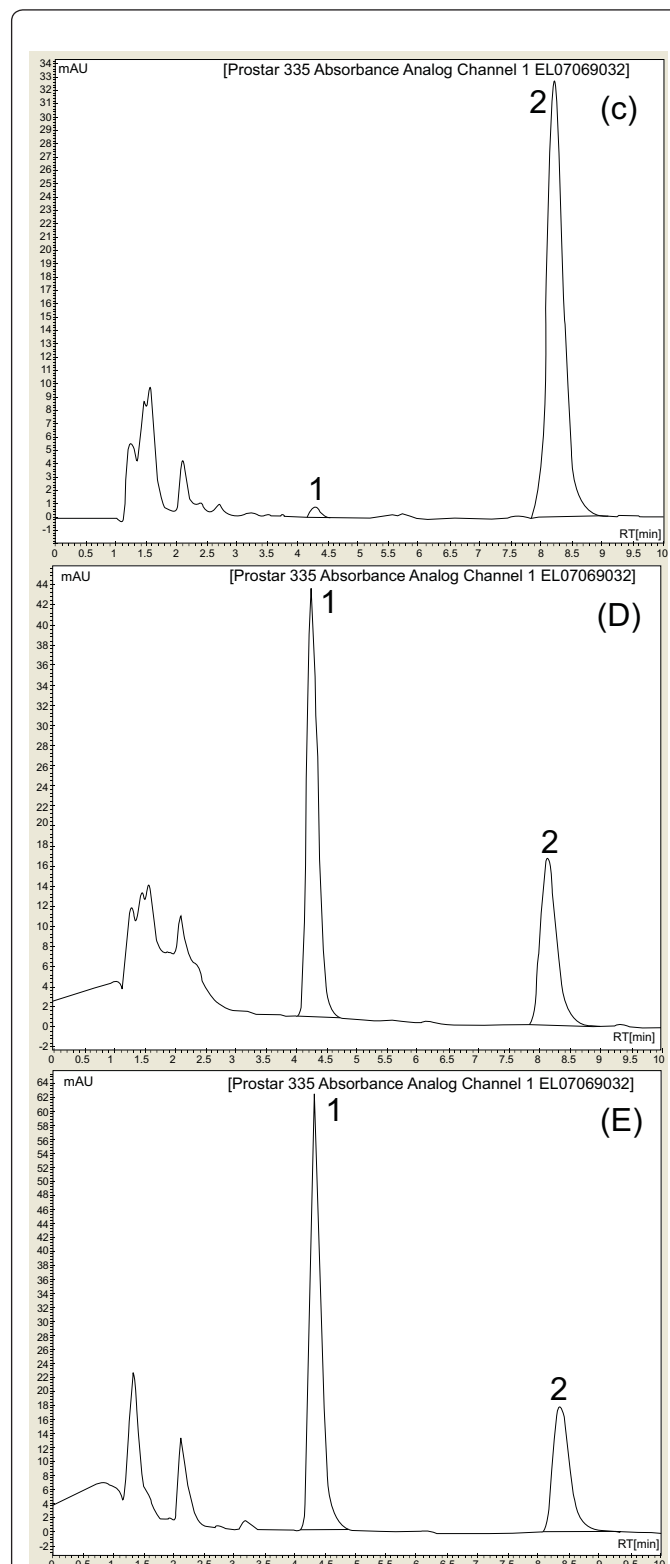
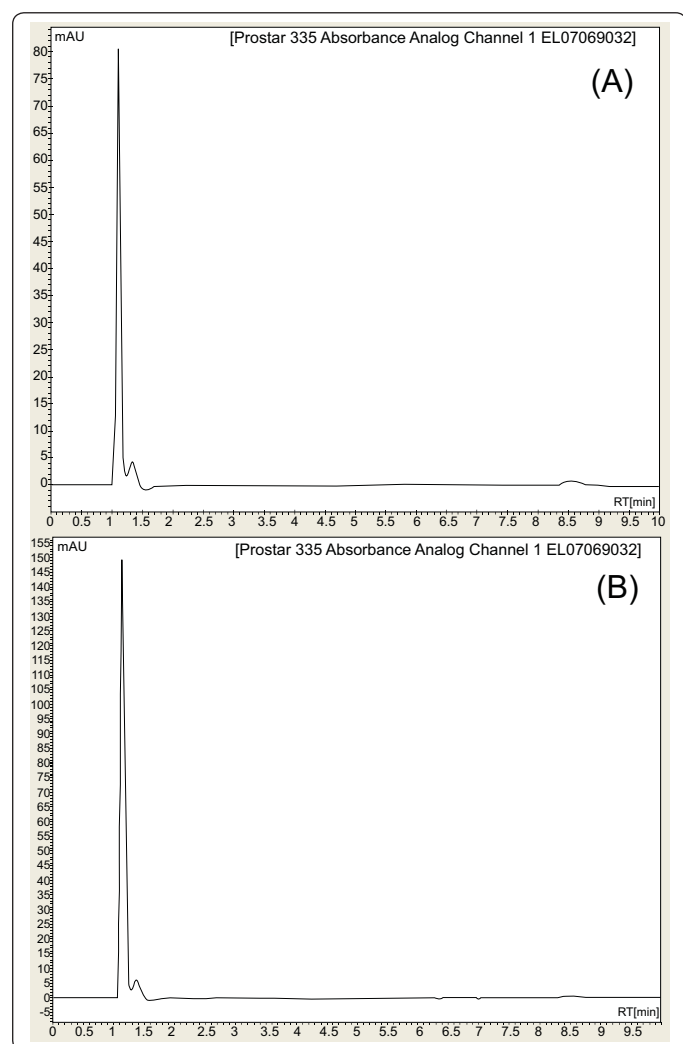


-80°C for up to 4 months was analyzed, since this is the temperature at which the samples were stored before analysis. To assess the stability of the samples between the time of extraction and the HPLC run, the samples were analyzed at the time of extraction and the values were compared to the 10 and 24 h post-extraction values of the same samples stored at room temperature. These tests provide the validation for using the auto-sampler when analyzing multiple samples.

### Pharmacokinetic and statistical analyses

Pharmacokinetic analysis of naproxen was carried out according to a standard non-compartmental method using the WinNonlin software (Pharsight Co., CA, Version 2.0).  $C_{max}$  and  $T_{max}$  were obtained directly from the observed data. The  $AUC_t$  was calculated by the trapezoidal method. The  $AUC_{inf}$  was calculated as  $AUC_t + C_t/K_e$ , where  $C_t$  was the last quantifiable concentration,  $K_e$  was the terminal elimination rate constant and was determined by least-squares regression analysis during the terminal log-linear phase of the concentration-time curve. The  $T_{1/2}$  was calculated as  $0.693/K_e$ .

Statistical analyses of variance (ANOVA) of  $AUC_t$ ,  $AUC_{inf}$  and  $C_{max}$  were calculated after transformation of the data to their logarithmic (ln) values. Using the error variance ( $S^2$ ) obtained from the ANOVA, the 90% confidence intervals (CI) were calculated.



**Figure 1:** HPLC chromatograms of blank plasma (A), hemolysate plasma (B), QC sample spiked with naproxen at  $0.5 \mu\text{g mL}^{-1}$  and internal standard (C), a calibrator spiked with naproxen at  $100 \mu\text{g mL}^{-1}$  and internal standard (D), and plasma sample 1 h after administration of naproxen (E). Peak 1: naproxen at about 4.26 minutes; Peak 2: internal standard at about 8.23 minutes.

## Results

### Method validation

Selectivity and linearity: The Figure 1 shows representative HPLC chromatograms. The Figure 1 D shows a steady baseline, the naproxen peak was symmetrical and well separated from the plasma peak. Naproxen and internal standard were well separated using the above described chromatographic condition with retention times of 4.26 and 8.23 min respectively. No interfering peaks from endogenous substances in the control plasma samples of different rat or other reagents were detected under the conditions employed.

The peak area ratio (naproxen/internal standard) as a function of the nominal naproxen concentrations over a wide range of 0.25 - 200  $\mu\text{g mL}^{-1}$  was linear. The regression coefficient R<sup>2</sup> was 0.9987. The weighted linear regression equation was:  $y = 0.014x + 0.0343$ .

**Precision, accuracy and recovery:** The intra-day and inter-day precision and accuracy for the plasma naproxen are summarized in Table 1. The intra-day and inter-day variability for the different QC were minimal, ranging from 2.46% to 12.39%, indicating excellent precision. Accuracies using the same QC ranged from 86.7% to 101.1%. All these variabilities were well within acceptable limits. Precision and accuracy for the LLOQ of 0.25  $\mu\text{g mL}^{-1}$  were 17.6% and 98%, respectively.

The recovery from spiked plasma was calculated by comparing

| Nominal concentration ( $\mu\text{g mL}^{-1}$ ) | Measured concentration ( $\mu\text{g mL}^{-1}$ ) | $\pm$ S.D. | Precision (CV%) | Accuracy (%) |
|---|--|------------|-----------------|--------------|
| <b>Intra-day</b>                                |  |            |                 |              |
| 0.5   | 0.467  | 0.024      | 5.24            | 93.5         |
| 15  | 12.99  | 0.750      | 5.77            | 86.7         |
| 75  | 73.71  | 2.238      | 3.03            | 98.3         |
| 150   | 151.62   | 3.730      | 2.46            | 101.1        |
| <b>Inter-day</b>                                |  |            |                 |              |
| 0.5   | 0.426  | 0.060      | 12.30           | 98.5         |
| 15  | 13.39  | 1.302      | 9.71            | 89.3         |
| 75  | 70.07  | 8.683      | 12.39           | 93.4         |
| 150   | 149.05   | 4.281      | 2.87            | 99.3         |

**Table 1:** Intra-day and Inter-day assays precision and accuracy for naproxen in rat plasma ( $n = 5$ ).

| Nominal concentration ( $\mu\text{g mL}^{-1}$ ) | Measured concentration ( $\mu\text{g mL}^{-1}$ ) $\pm$ S.D. |                         | % Change |
|---|---|-------------------------|----------|
|   | Fresh samples   | Three freeze-thaw cycle |          |
| 0.5   | 0.507 $\pm$ 0.034   | 0.501 $\pm$ 0.069       | - 1.18%  |
| 15  | 14.92 $\pm$ 0.85  | 13.82 $\pm$ 0.95        | - 7.37%  |
| 75  | 72.57 $\pm$ 3.65  | 75.01 $\pm$ 8.29        | + 3.36%  |
| 150   | 152.72 $\pm$ 6.55   | 148.29 $\pm$ 4.27       | - 2.90%  |
| <b>Long term stability</b>                      |   |                         |          |
| 0.5   | 0.453 $\pm$ 0.021   | 0.417 $\pm$ 0.058       | - 7.94%  |
| 15  | 14.89 $\pm$ 1.44  | 13.34 $\pm$ 1.24        | - 10.40% |
| 75  | 70.23 $\pm$ 5.34  | 68.65 $\pm$ 7.96        | - 2.24%  |
| 150   | 151.66 $\pm$ 9.17   | 147.58 $\pm$ 4.75       | - 2.69%  |

**Table 2:** Stability of naproxen in rat plasma after three freeze-thaw cycles at  $-20^{\circ}\text{C}$  and after long term stability at  $-80^{\circ}\text{C}$  ( $n = 3$ ).

| Pharmacokinetic parameters                     | Reference suspension | Suspension A (Test 1) | Suspension B (Test 2) |
|--|----------------------|-----------------------|-----------------------|
| AUC <sub>t</sub> ( $\mu\text{g.h.mL}^{-1}$ )   | 2438.16 $\pm$ 291.34 | 1755.02 $\pm$ 228.90  | 1955.28 $\pm$ 142.80  |
| AUC <sub>inf</sub> ( $\mu\text{g.h.mL}^{-1}$ ) | 2465.97 $\pm$ 291.56 | 1766.93 $\pm$ 229.03  | 1984.10 $\pm$ 133.73  |
| C <sub>max</sub> ( $\mu\text{g.mL}^{-1}$ )     | 191.25 $\pm$ 11.17   | 188.22 $\pm$ 24.78    | 160.50 $\pm$ 10.58    |
| T <sub>max</sub> (h)                           | 1.00 $\pm$ 0.106     | 1.06 $\pm$ 0.092      | 0.66 $\pm$ 0.102      |
| t <sub>1/2</sub> (h)                           | 9.98 $\pm$ 1.26      | 5.49 $\pm$ 0.50       | 8.68 $\pm$ 1.05       |
| AUC <sub>t</sub> /AUC <sub>inf</sub> (%)       | 98.86 $\pm$ 0.327    | 99.31 $\pm$ 0.141     | 97.75 $\pm$ 0.842     |

**Table 3:** Pharmacokinetic parameters of naproxen after oral administration of naproxen sodium suspension in rat, each value represents the mean  $\pm$  S.D. ( $n=5$ ).

peak areas with QC samples ( $n=3$ ) at four different concentration levels. The mean recoveries for naproxen in four QC samples (0.5, 15, 75 and 150  $\mu\text{g mL}^{-1}$ ) were 74.51%, 95.16%, 96.07% and 98.69%, respectively. Recovery of the internal standard was 94.2%. The lower recovery for the 0.5  $\mu\text{g mL}^{-1}$  QC was probably due to the low concentration and loss of naproxen through non-specific binding to precipitated protein.

**Stability:** The results of stability of naproxen in rat plasma after three freeze-thaw cycles and the long term storage are shown in Table 2. There were no significant changes ( $-3.37$  to  $+3.36\%$  for freeze-thaw cycles and  $-2.24$  to  $-10.40\%$  for long term stability). The samples remained within acceptable limits of precision and accuracy. These results indicated that naproxen was stable for least 5 days in rat plasma stored at  $-20^{\circ}\text{C}$  and for least 4 months when stored at  $-80^{\circ}\text{C}$ . In addition the extracted samples were stable at room temperature for the periods under which determinations were made, which were 10 and 24 h later (not shown). This is important because samples can be stored in an auto-sampler at room temperature until measurement without compromising the concentration of naproxen.

### Pharmacokinetic evaluation

In this study, the pharmacokinetic parameters AUC<sub>t</sub>, AUC<sub>inf</sub> and C<sub>max</sub>, T<sub>max</sub> and T<sub>1/2</sub> were used to compare the formulations. The results of C<sub>max</sub> and AUC<sub>t</sub> were 191.25  $\pm$  11.17  $\mu\text{g.mL}^{-1}$  and 2438.16  $\pm$  291.34  $\mu\text{g.h.mL}^{-1}$  for reference drug, 188.22  $\pm$  24.78  $\mu\text{g.mL}^{-1}$  and 1755.02  $\pm$  228.90  $\mu\text{g.h.mL}^{-1}$  for test 1, 160.50  $\pm$  10.58  $\mu\text{g.mL}^{-1}$  and 1955.28  $\pm$  142.80  $\mu\text{g.h.mL}^{-1}$  for test 2 (Table 3).

Mean plasma concentrations *versus* time profiles of naproxen after administration of two tests and reference formulations in rats ( $n = 5$ ) are shown in Figure 2. The mean plasma concentration-time curves of the formulations were comparable.

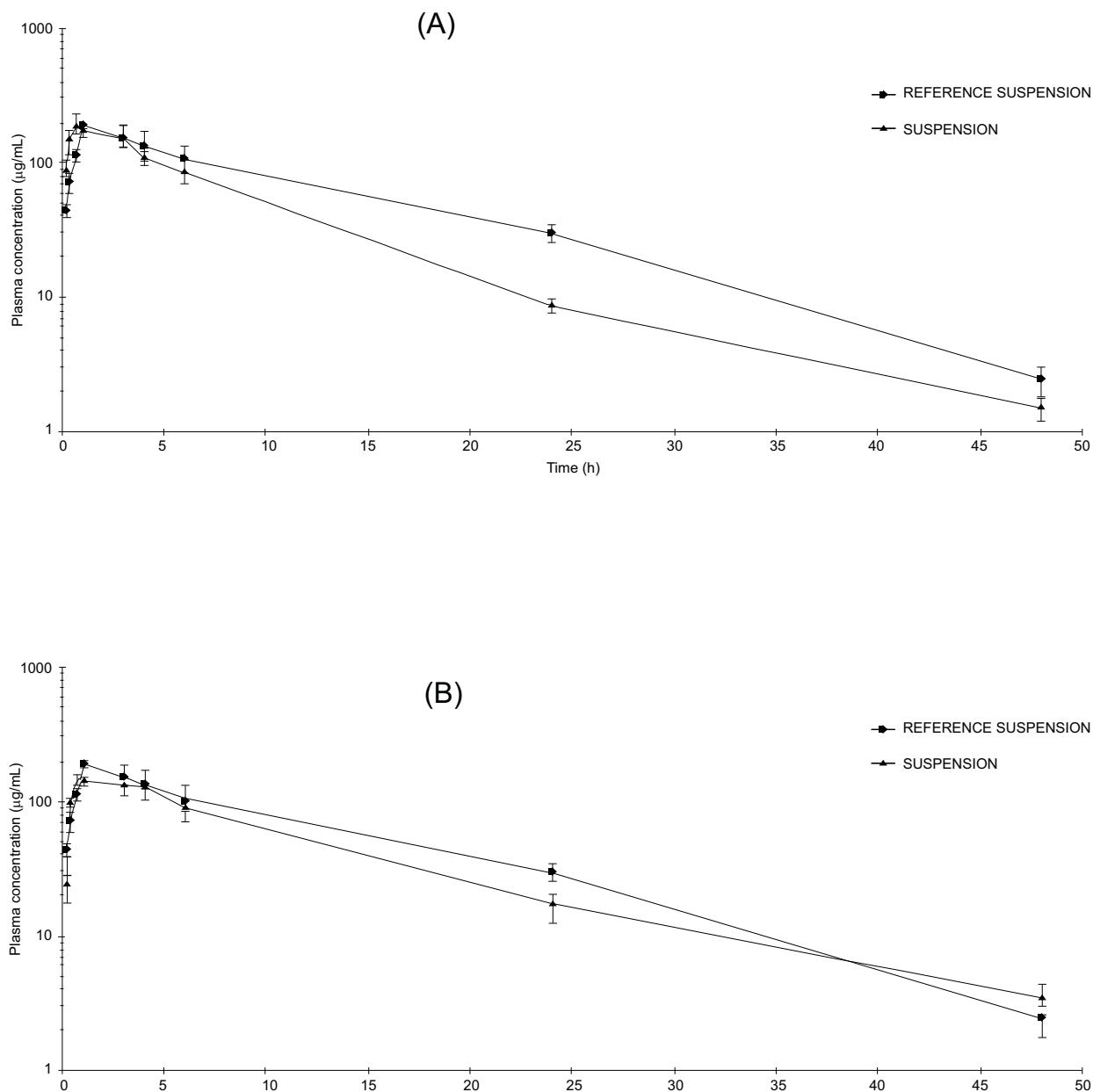
As showed in Table 4, the 90% confidence intervals for geometric mean ratios of test2/reference for AUC<sub>t</sub> and C<sub>max</sub> were within the acceptable limits (80 – 125%) of bioequivalence which implies that the bioequivalence criteria were met (FDA, 2006). For test 1/reference ratio, the result was C<sub>max</sub> 98.41% and AUC<sub>t</sub> 71.98%.

## Discussion

For comparing the bioavailability between formulations, three groups of five animals were used for each administered formulation of naproxen sodium oral suspension. The number of animals was suitable for this pharmacokinetic study (Mathy et al., 2001). Before testing the bioanalytical method was validated to ensure the reliability of results.

The bioanalytical method described above was simple and rapid for the determination of naproxen in rat plasma. A one-step protein precipitation provided a simple, rapid and economic procedure. Other methods described in the literature use sophisticated techniques for the quantification of naproxen in biological matrices, like LC-MS, fluorescence spectroscopy and capillary electrophoresis (Mikami, 2000; Monser and Darghouth, 2003; Murillo Pilgrim and Garcia Borneo, 1998; Sirisuth, 2001; Pai and Liu, 2002; Sultana et al., 2008; Vermeulen and Remon, 2000; Xiong et al., 2008; Hsu et al., 2006). Despite the high sensitivity of these techniques, there is high cost as well as a lot of time spent with clean up and extraction of drug. This HPLC analysis method showed excellent precision, accuracy, stability, specificity and recovery. Therefore, this method was suitable and applied to monitor the concentration of naproxen in rat plasma.





**Figure 2:** Mean plasma concentration-time profiles of naproxen in wistar rats (n=5) after oral administration of naproxen sodium suspension: reference versus test 1 (A) and reference versus test 2 (B).

The peak plasma concentration represents the maximum plasma drug concentration obtained after oral administration of drug.  $C_{max}$  provides an indication that the drug is sufficiently systemically absorbed to provide the therapeutic response (Boynton, 1988; Aarbakke et al., 1983). In the reference and test 1 formulations,  $C_{max}$  was achieved within 1 h. This value is consistent with the values previously reported by other investigators (Carrasco-Portugal, 2006; Sevelius et al., 1980). In 1972, Runkel et al. (1972) performed the first in vivo tests with naproxen that was performed in rats, dog, pig, monkey and human. In all animals species studied, the half-life of naproxen ranged from 2 to 35 hours, and in humans ranged from 10 to 17 hours. Setiawati et al. (2009) investigated the pharmacokinetic parameters of naproxen following an administration of 250 mg of

naproxen sodium oral suspension in humans. They obtained values of  $721.73 \pm 18.47$  for  $AUC_{72h}$ ,  $43.93 \pm 1.83$  for  $C_{max}$  and  $2.38 \pm 0.21$  for  $T_{max}$ .

In this study, the  $T_{max}$  for the reference and test 1 formulations was found to be 1 h, while for test 2 formulations was 0.66 h, suggesting that a rapid absorption of naproxen from test 2 formulations is occurred.

As indicated in Table 3, the  $AUC_t$  value of naproxen was more than 80% compared to the value of  $AUC_{inf}$  for all formulations tested (99.31%, 97.75 and 98.86 for test 1, test 2 and the reference suspension, respectively), indicating that the sampling time was



| Pharmacokinetic parameter                 | Naproxen sodium oral suspension 25 mg mL <sup>-1</sup> |                               |
|---|--|-------------------------------|
|   | Test 1/Reference (%) (90% CI)                          | Test 2/Reference (%) (90% CI) |
| C <sub>max</sub> (µg.mL <sup>-1</sup> )   | 98.41<br>(85.63 – 111.19)                              | 83.92<br>(74.30 – 83.98)      |
| AUC <sub>t</sub> (µg.h.mL <sup>-1</sup> ) | 71.98<br>(56.13 – 70.82)                               | 80.19<br>(66.22 – 92.93)      |

**Table 4:** The ratio of log-transformed values of C<sub>max</sub> and AUC<sub>t</sub> and the corresponding CI 90%.

sufficiently long to ensure an adequate description of the absorption phase (FDA, 2006).

Since the 90% CI for AUC<sub>t</sub> and C<sub>max</sub> ratio for reference and test 1 formulation were not inside the 80-125% interval proposed by the US Food and Drug Administration Agency, it suggests that naproxen formulation elaborated by the compounding pharmacy A was not considered bioequivalent to the reference formulation. Nevertheless, the test 2 and reference naproxen sodium oral suspension were bioequivalent in terms of the rate and extent of absorption in these conditions. When two formulations of the same drug are bioequivalent in rate and extent of absorption, it is assumed that they are therapeutically equivalent (FDA, 2006).

It is important to point out that the reference suspension was a powder for reconstitution and the compounded products presented syrup form. As shown in the results, these different formulations influenced the bioavailability of these drugs. It suggests that the therapeutic response of the test 1 formulation may be compromised.

## Conclusions

The test 1 formulation failed to demonstrate a bioequivalence to the reference drug; this result indicates the need of a hard inspection of the Brazilian compounding pharmacies beyond the need of standardization of formulations by pharmacies.

The test 2 and reference naproxen sodium suspension were bioequivalent in terms of the rate and extent of absorption under these conditions. It be concluded that the quality of compounded medicines should always be associated with the Good Handling Practices, following operational procedures in order to ensure the patient safety and the quality of these products.

## Acknowledgment

This work was supported by Brazilian government research grants (CAPES and CNPq).

## References

- Aarbakke J, Gadeholt G, Høylandskjaer A (1983) Pharmacokinetics of naproxen after oral administration of two tablet formulations in healthy volunteers. *Int J Clin Pharmacol Ther Toxicol* 6: 281-283. » [CrossRef](#) » [PubMed](#) » [Google Scholar](#)
- ANVISA (2008) Fármacos manipulados têm sido consumidos cada vez mais. Available at <http://www.anvisa.gov.br/divulga/artigos/farmacos.htm>. » [CrossRef](#) » [PubMed](#) » [Google Scholar](#)
- Aronson JK (2006) Meyler's Side Effects of Drugs: The International Encyclopedia of Adverse Drug Reactions and Interactions. 2426-2429. » [CrossRef](#) » [PubMed](#) » [Google Scholar](#)
- Attia DA (2009) In vitro and in vivo evaluation of transdermal absorption of naproxen sodium. *Australian Journal of Basic and Applied Sciences* 3: 2154-2165. » [CrossRef](#) » [PubMed](#) » [Google Scholar](#)
- Boynton CS, Dick CF, Mayor GH (1988) NSAID: An overview. *J Clin Pharmacol* 28: 512-517. » [CrossRef](#) » [PubMed](#) » [Google Scholar](#)
- Brogden RN, Heel RC, Speight TM, Avery GS (1979) Naproxen up to date: a review of its pharmacological properties and therapeutic efficacy and use in rheumatic diseases and pain states. *Drugs* 18: 241-277. » [CrossRef](#) » [PubMed](#) » [Google Scholar](#)
- Cakrt M, Hercegová A, Lesko J, Polonský J, Sádecká J, et al. (2001) Isotachophoretic determination of naproxen in the presence of its metabolite in human serum. *J Chromatogr A* 916: 207-214. » [CrossRef](#) » [PubMed](#) » [Google Scholar](#)
- Carrasco-Portugal MC, Herrera JE, Reyes-García G, Medina-Santillán R, Flores-Murrieta FJ (2006) Comparative bioavailability of two oral suspensions of naproxen sodium. *Arzneimittelforschung* 8: 589-592. » [CrossRef](#) » [PubMed](#) » [Google Scholar](#)
- Costi EM, Goryacheva I, Sicilia MD, Rubio S, Pérez-Bendito D (2008) Supramolecular solid-phase extraction of ibuprofen and naproxen from sewage based on the formation of mixed supramolecular aggregates prior to their liquid chromatographic/photometric determination. *J Chromatogr A* 1: 1-7. » [CrossRef](#) » [PubMed](#) » [Google Scholar](#)
- Farrar H, Letzig L, Gill M (2002) Validation of a liquid chromatographic method for the determination of ibuprofen in human plasma. *J Chromatogr B Analyt Technol Biomed Life Sci* 780: 341-348. » [CrossRef](#) » [PubMed](#) » [Google Scholar](#)
- FDA (2001) Center of Drug Evaluation and Research, Guidance for Industry: Bioanalytical Method Validation. Available at <http://www.fda.gov/cder/guidance/4252fnl.pdf>. » [CrossRef](#) » [PubMed](#) » [Google Scholar](#)
- FDA (2006) Center of Drug Evaluation and Research, Guidance for Industry: Bioequivalence Guidance. <http://www.fda.gov/downloads/AnimalVeterinary/GuidanceComplianceEnforcement/GuidanceforIndustry/ucm052363.pdf>. » [CrossRef](#) » [PubMed](#) » [Google Scholar](#)
- Hsu YH, Liou YB, Lee JA, Chen CY, Wu AB (2006) Assay of naproxen by high-performance liquid chromatography and identification of its photoproducts by LC-ESI MS. *Biomed Chromatogr* 20: 787-793. » [CrossRef](#) » [PubMed](#) » [Google Scholar](#)
- Mathy FX, Preat V, Verbeeck RK (2001) Validation of subcutaneous microdialysis sampling for pharmacokinetic studies of flurbiprofen in the rat. *J Pharm Sci* 11: 1897-1906. » [CrossRef](#) » [PubMed](#) » [Google Scholar](#)
- Marta LC, Tacconelli S, Sciulli MG, Anzellotti P, Francesco LD, et al. (2007) Human pharmacology of naproxen sodium. *J Pharmacol Exp Ther* 2: 453-460. » [CrossRef](#) » [PubMed](#) » [Google Scholar](#)
- Martín MJ, Pablos F, González AG (1999) Simultaneous determination of caffeine and non-steroidal anti-inflammatory drugs in pharmaceutical formulations and blood plasma by reversed-phase HPLC from linear gradient elution. *Talanta* 49: 453-459. » [CrossRef](#) » [PubMed](#) » [Google Scholar](#)
- Mikami K (2000) Simultaneous analysis of naproxen, nabumetone and its major metabolite 6-methoxy-2-naphthylacetic acid in pharmaceuticals and human urine by high-performance liquid chromatography. *J Pharm Biomed Anal* 23: 917-925. » [CrossRef](#) » [PubMed](#) » [Google Scholar](#)
- Monser L, Darghouth F (2003) Simultaneous determination of naproxen and related compounds by HPLC using porous graphitic carbon column. *J Pharm Biomed Anal* 4-5: 1087-1092. » [CrossRef](#) » [PubMed](#) » [Google Scholar](#)
- Murillo Pilgrim A, Garcia Borneo LFG (1998) First derivative non-linear variable-angle synchronous fluorescence spectroscopy for the simultaneous determination of salicylamide, salicylate and naproxen in serum and urine. *Analytica Chimica Acta* 373: 119-129. » [CrossRef](#) » [PubMed](#) » [Google Scholar](#)
- Paino IM, Ximenes VF, Fonseca LM, Kanegae MP, Khalil NM, et al. (2005) Effect of therapeutic plasma concentrations of non-steroidal anti-inflammatory drugs on the production of reactive oxygen species by activated rat neutrophils. *Brazilian Journal of Medical and Biological Research*. 38: 543-551. » [CrossRef](#) » [PubMed](#) » [Google Scholar](#)
- Pai YF, Liu CY (2002) Capillary electrochromatographic separation of non-steroidal anti-inflammatory drugs with a histidine bonded phase. *J Chromatogr A* 2: 293-301. » [CrossRef](#) » [PubMed](#) » [Google Scholar](#)
- Redação Anfarmag (2009) Available at <http://www.anfarmag.org.br/integra.php>. » [CrossRef](#) » [PubMed](#) » [Google Scholar](#)
- Runkel R, Chaplin M, Boost G, Segre E, Forchielli E (1972) Absorption, distribution, metabolism, and excretion of naproxen in various laboratory animals and human subjects. *J Pharm Sci* 5: 703-708. » [CrossRef](#) » [PubMed](#) » [Google Scholar](#)
- Setiawati E, Deniati SH, Yunaidi DA, Handayani LR, Harinanto G, et al. (2009) Bioequivalence study with two naproxen sodium tablet formulations in healthy subjects. *J Bioequiv Availab* 1: 28-33. » [CrossRef](#) » [PubMed](#) » [Google Scholar](#)



25. Sevelius H, Runkel R, Segre E, Bloomfield SS (1980) Bioavailability of naproxen sodium and its relationship to clinical analgesic effects. *Br J Clin Pharmacol* 6: 259-263. » [CrossRef](#) » [PubMed](#) » [Google Scholar](#)
26. Sirisuth N (2001) Systematic method for the development and validation of an IVIVC metoprolol and naproxen drug examples. *International Journal of Generic Drugs. IVIVC Series Part III*: 250-258. » [CrossRef](#) » [PubMed](#) » [Google Scholar](#)
27. Suh H, Jun HW, Lu GW (1995) Fluorometric high performance liquid chromatography for quantitation of naproxen in serum. *Journal of Liquid Chromatography & Related Technologies* 15: 3105-3115. » [CrossRef](#) » [PubMed](#) » [Google Scholar](#)
28. Sultana N, Arayne MS, Iftikhar B (2008) Simultaneous determination of atenolol, rosuvastatin, spironolactone, glibenclamide and naproxen sodium in pharmaceutical formulations and human plasma by RP-HPLC. *Journal of the Chinese Chemical Society* 5: 1022-1029. » [CrossRef](#) » [PubMed](#) » [Google Scholar](#)
29. Valentovic M (2008) xPharm: The Comprehensive Pharmacology Reference. 1-6. » [CrossRef](#) » [PubMed](#) » [Google Scholar](#)
30. Vermeulen B, Remon JP (2000) Validation of a high-performance liquid chromatographic method for the determination of ibuprofen enantiomers in plasma of broiler chickens. *J Chromatogr B Biomed Sci Appl* 2: 243-251. » [CrossRef](#) » [PubMed](#) » [Google Scholar](#)
31. Xiong X, Zhang Q, Xiong F, Tang Y (2008) Determination of three nonsteroidal anti-inflammatory drugs in human plasma by LC coupled with chemiluminescence detection. *Chromatographia* 11-12: 929-934. » [CrossRef](#) » [PubMed](#) » [Google Scholar](#)
32. Zakeri-Milani P, Barzegar-Jalali M, Tajerzadeh H, Azami Y, Valizadeh H (2005) Simultaneous determination of naproxen, ketoprofen and phenol red in samples from rat intestinal permeability studies: HPLC method development and validation. *J Pharm Biomed Anal* 3-4: 624-630. » [CrossRef](#) » [PubMed](#) » [Google Scholar](#)

